

City: Weston



Joni Usdan
Residential Real Estate Specialist
2032167654
www.jonihomes.com
joni@jonihomes.com



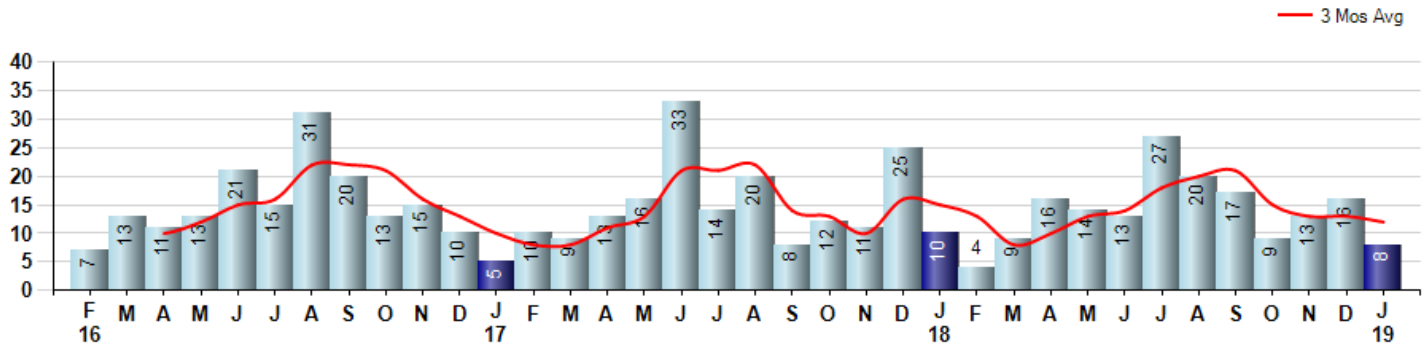
Price Range: 0 to 999999999 | Properties: Single Family Home

| Market Profile & Trends Overview | Trending Versus*: | | | | | Trending Versus*: | | |
|--|-------------------|-------|------|------|--------|-------------------|----------|-----------|
| | Month | LM | L3M | PYM | LY | YTD | PriorYTD | PriorYear |
| Median List Price of all Current Listings | \$849,000 | -5% | | -7% | | | | |
| Average List Price of all Current Listings | \$1,117,866 | -4% | | 8% | | | | |
| January Median Sales Price | \$648,000 | -9% | -8% | -5% | -8% | \$648,000 | -5% | -8% |
| January Average Sales Price | \$688,875 | -19% | -12% | -5% | -14% | \$688,875 | -5% | -14% |
| Total Properties Currently for Sale (Inventory) | 110 | 3% | | 11% | | | | |
| January Number of Properties Sold | 8 | -50% | | -20% | | | 0% | |
| January Average Days on Market (Solds) | 128 | -2% | -8% | -2% | 17% | 128 | -2% | 17% |
| Asking Price per Square Foot (based on New Listings) | \$193 | -3% | -10% | -23% | -17% | \$193 | -23% | -17% |
| January Sold Price per Square Foot | \$176 | -14% | -14% | -12% | -18% | \$176 | -12% | -18% |
| January Month's Supply of Inventory | 13.8 | 106% | 28% | 39% | 11% | 13.8 | 39% | 11% |
| January Sale Price vs List Price Ratio | 82.2% | -5.5% | -8% | -4% | -10.1% | 82.2% | -3.8% | -10.2% |

* LM=Last Month / L3M=Last 3 Months / PYM=Same Month Prior Year / LY=Last Year / YTD = Year-to-date

Property Sales

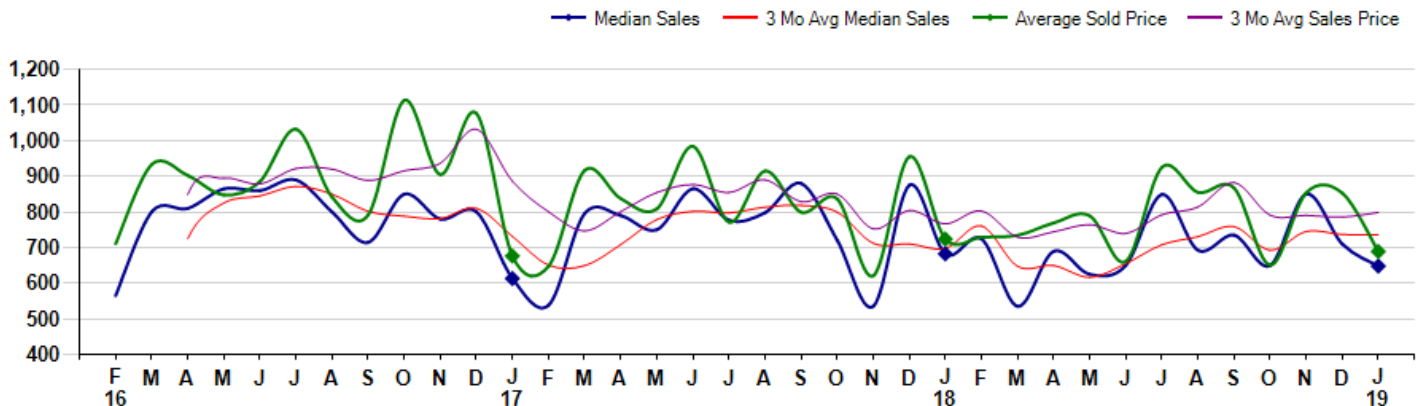
January Property sales were 8, down -20.0% from 10 in January of 2018 and -50.0% lower than the 16 sales last month. January 2019 sales were at a mid level compared to January of 2018 and 2017. January YTD sales of 8 are running -20.0% behind last year's year-to-date sales of 10.



Prices

The Median Sales Price in January was \$648,000, down -5.1% from \$682,500 in January of 2018 and down -8.7% from \$710,000 last month. The Average Sales Price in January was \$688,875, down -4.8% from \$723,900 in January of 2018 and down -19.2% from \$853,063 last month. January 2019 ASP was at a mid range compared to January of 2018 and 2017.

Median means Middle (the same # of properties sold above and below Median) (000's)



City: *Weston*



Joni Usdan
Residential Real Estate Specialist
2032167654
www.jonihomes.com
joni@jonihomes.com



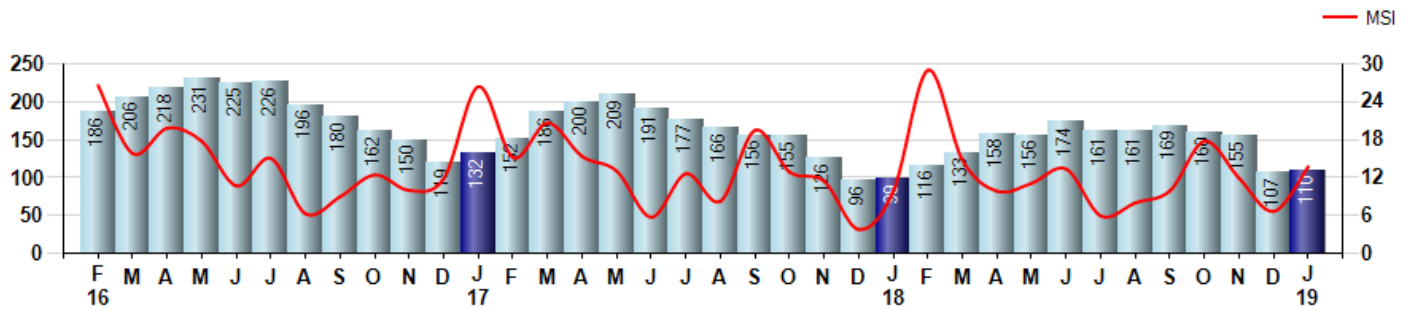
Price Range: 0 to 999999999 | Properties: Single Family Home

Inventory & MSI

The Total Inventory of Properties available for sale as of January was 110, up 2.8% from 107 last month and up 11.1% from 99 in January of last year. January 2019 Inventory was at a mid range compared to January of 2018 and 2017.

A comparatively lower MSI is more beneficial for sellers while a higher MSI is better for buyers. The January 2019 MSI of 13.8 months was at a mid range compared with January of 2018 and 2017.

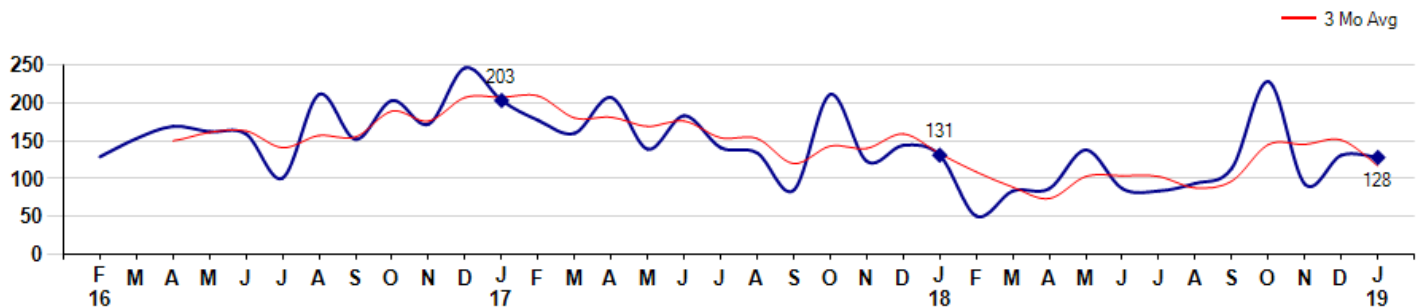
MSI is the # of months needed to sell all of the Inventory at the monthly Sales Pace



Market Time

The average Days On Market(DOM) shows how many days the average Property is on the Market before it sells. An upward trend in DOM tends to indicate a move towards more of a Buyer's market, a downward trend a move towards more of a Seller's market. The DOM for January was 128, down -2.3% from 131 days last month and down -2.3% from 131 days in January of last year. The January 2019 DOM was at its lowest level compared with January of 2018 and 2017.

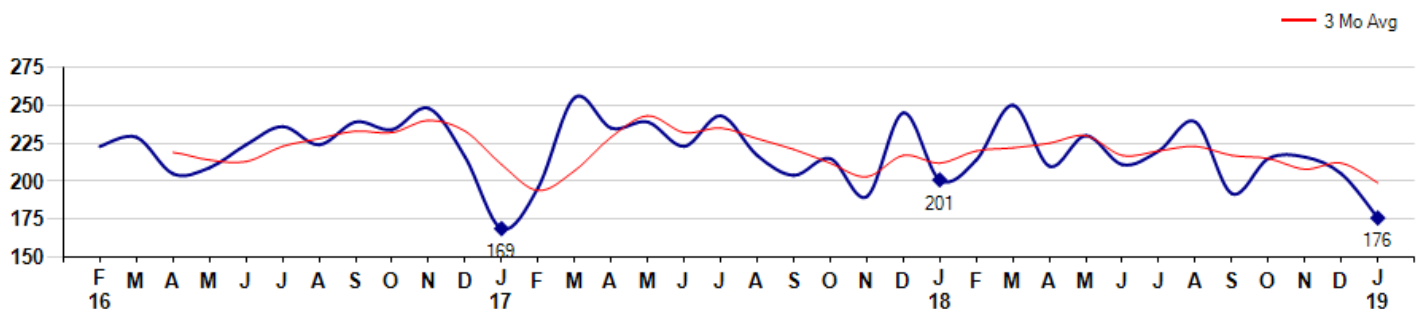
Average Days on Market(Listing to Contract) for properties sold during the month



Selling Price per Square Foot

The Selling Price per Square Foot is a great indicator for the direction of Property values. Since Median Sales Price and Average Sales price can be impacted by the 'mix' of high or low end Properties in the market, the selling price per square foot is a more normalized indicator on the direction of Property values. The January 2019 Selling Price per Square Foot of \$176 was down -14.1% from \$205 last month and down -12.4% from \$201 in January of last year.

Average Selling Price per Square Foot for properties that sold during the month



City: Weston



Joni Usdan
 Residential Real Estate Specialist
 2032167654
 www.jonihomes.com
 joni@jonihomes.com

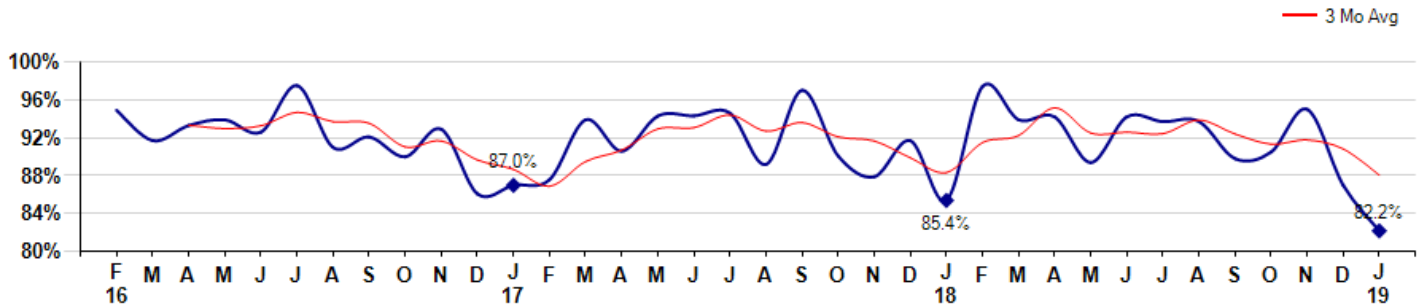


Price Range: 0 to 999999999 | Properties: Single Family Home

Selling Price vs Listing Price

The Selling Price vs Listing Price reveals the average amount that Sellers are agreeing to come down from their list price. The lower the ratio is below 100% the more of a Buyer's market exists, a ratio at or above 100% indicates more of a Seller's market. The January 2019 Selling Price vs List Price of 82.2% was down from 87.0% last month and down from 85.4% in January of last year.

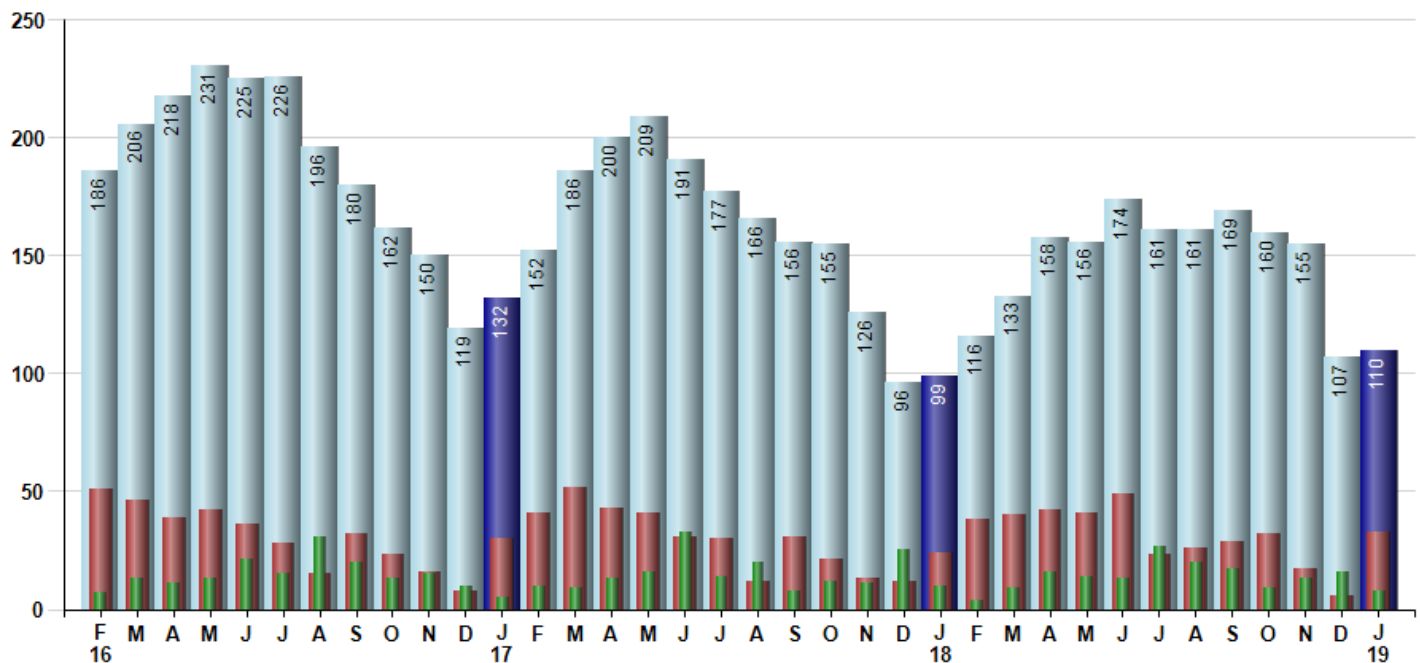
Avg Selling Price divided by Avg Listing Price for sold properties during the month



Inventory / New Listings / Sales

This last view of the market combines monthly inventory of Properties for sale along with New Listings and Sales. The graph shows the basic annual seasonality of the market as well as the relationship between these items. The number of New Listings in January 2019 was 33, up 450.0% from 6 last month and up 37.5% from 24 in January of last year.

Inventory (light blue), New Listings (red), Sold (green)



© 2019 Coldwell Banker Residential Brokerage. All Rights Reserved. Coldwell Banker Residential Brokerage fully supports the principles of the Fair Housing Act and the Equal Opportunity Act. Coldwell Banker Residential Brokerage is operated by a subsidiary of NRT LLC. Coldwell Banker and the Coldwell Banker Logo are registered service marks owned by Coldwell Banker Real Estate LLC.

Based on information from SmartMLS for the period 2/1/2016 through 1/31/2019. Due to MLS reporting methods and allowable reporting policy, this data is only informational and may not be completely accurate. Therefore, Coldwell Banker Residential Brokerage does not guarantee the data accuracy. Data maintained by the MLS's may not reflect all real estate activity in the market.

