

City: Wilton



Joni Usdan
Residential Real Estate Specialist
203-216-7654
www.jonihomes.com
joni@jonihomes.com



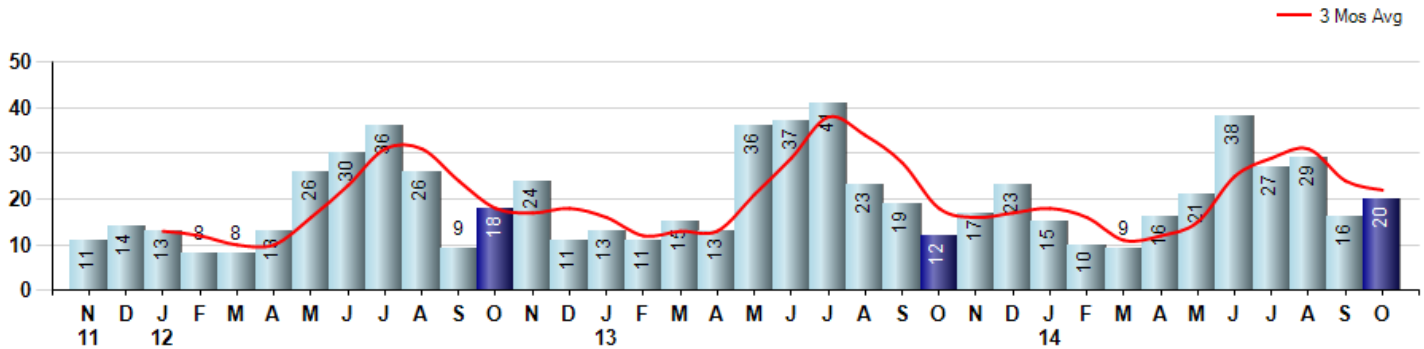
Price Range: \$0 to \$999,999,000 | Properties: Single Family Home

Market Profile & Trends Overview	Trending Versus*:					Trending Versus*:		
	Month	LM	L3M	PYM	LY	YTD	PriorYTD	PriorYear
Median List Price of all Current Listings	\$1,029,450	6%		8%				
Average List Price of all Current Listings	\$1,340,910	5%		4%				
October Median Sales Price	\$661,500	-25%	-18%	-17%	-16%	\$800,000	0%	1%
October Average Sales Price	\$720,415	-31%	-20%	-31%	-21%	\$916,291	2%	1%
Total Properties Currently for Sale (Inventory)	164	-16%		-15%				
October Number of Properties Sold	20	25%		67%			-9%	
October Average Days on Market (Solds)	150	-2%	10%	-21%	-10%	154	-4%	-7%
Asking Price per Square Foot (based on New Listings)	\$300	2%	-2%	-32%	-3%	\$304	-3%	-2%
October Sold Price per Square Foot	\$275	0%	-4%	-1%	0%	\$280	2%	2%
October Month's Supply of Inventory	8.2	-32%	-8%	-49%	-25%	11.0	-5%	1%
October Sale Price vs List Price Ratio	96.5%	1.0%	0%	0%	0.8%	96.6%	0.7%	0.9%

* LM=Last Month / L3M=Last 3 Months / PYM=Same Month Prior Year / LY=Last Year / YTD = Year-to-date

Property Sales

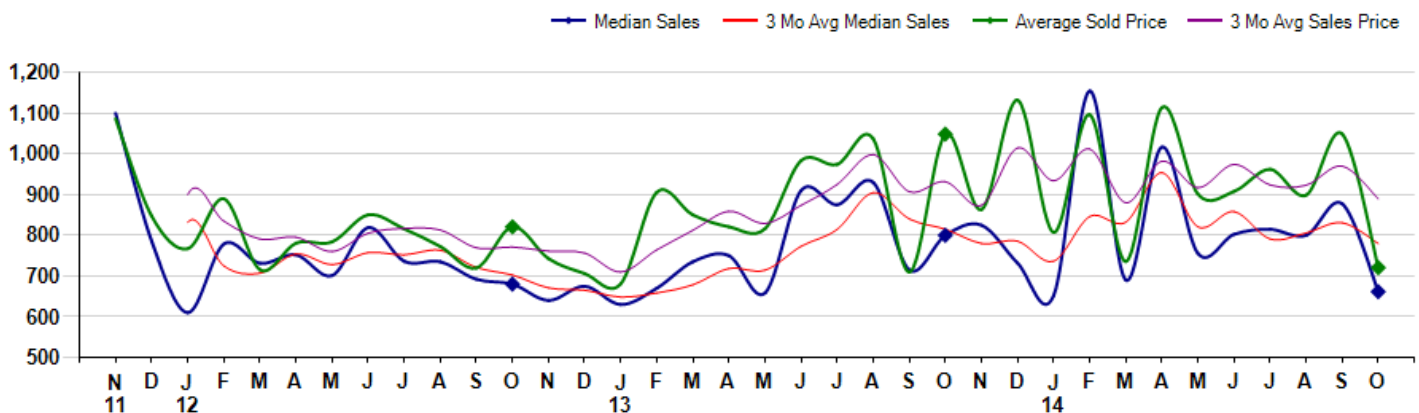
October Property sales were 20, up 66.7% from 12 in October of 2013 and 25.0% higher than the 16 sales last month. October 2014 sales were at their highest level compared to October of 2013 and 2012. October YTD sales of 201 are running -8.6% behind last year's year-to-date sales of 220.



Prices

The Median Sales Price in October was \$661,500, down -17.3% from \$800,000 in October of 2013 and down -24.6% from \$877,500 last month. The Average Sales Price in October was \$720,415, down -31.3% from \$1,048,667 in October of 2013 and down -31.3% from \$1,049,094 last month. October 2014 ASP was at the lowest level compared to October of 2013 and 2012.

Median means Middle (the same # of properties sold above and below Median) (000's)



City: Wilton



Joni Usdan
 Residential Real Estate Specialist
 203-216-7654
 www.jonihomes.com
 joni@jonihomes.com



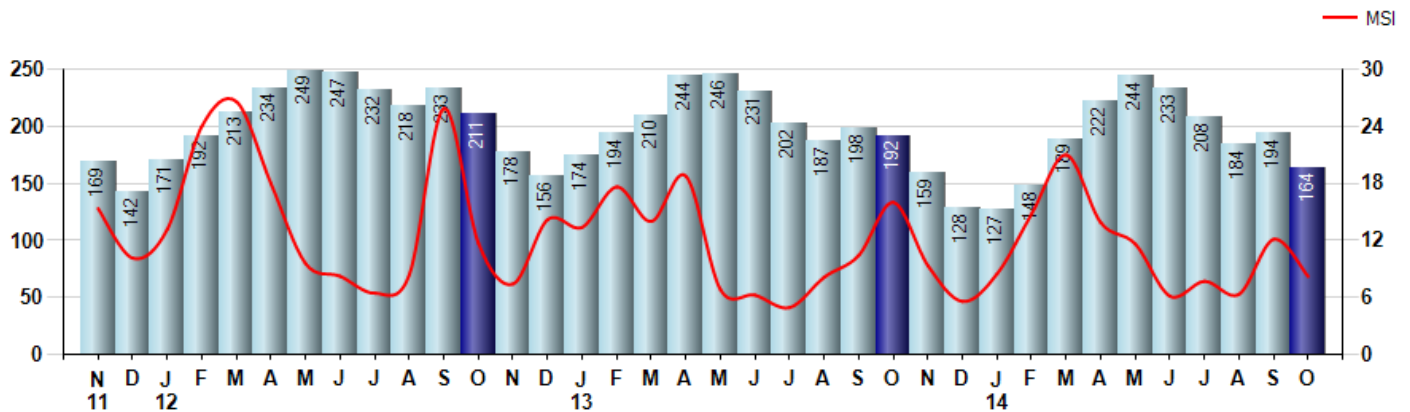
Price Range: \$0 to \$999,999,000 | Properties: Single Family Home

Inventory & MSI

The Total Inventory of Properties available for sale as of October was 164, down -15.5% from 194 last month and down -14.6% from 192 in October of last year. October 2014 Inventory was at the lowest level compared to October of 2013 and 2012.

A comparatively lower MSI is more beneficial for sellers while a higher MSI is better for buyers. The October 2014 MSI of 8.2 months was at its lowest level compared with October of 2013 and 2012.

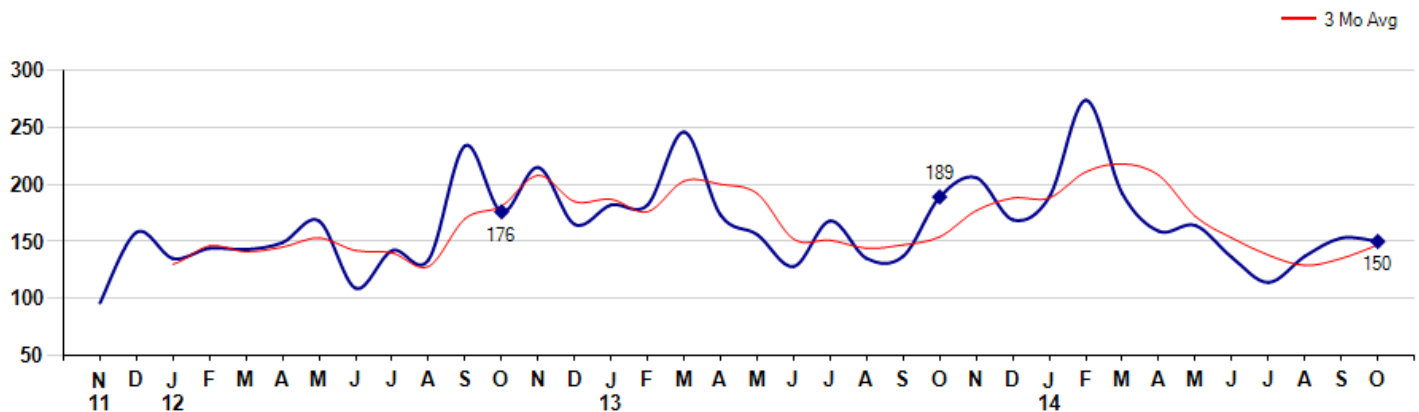
MSI is the # of months needed to sell all of the Inventory at the monthly Sales Pace



Market Time

The average Days On Market(DOM) shows how many days the average Property is on the Market before it sells. An upward trend in DOM tends to indicate a move towards more of a Buyer's market, a downward trend a move towards more of a Seller's market. The DOM for October was 150, down -2.0% from 153 days last month and down -20.6% from 189 days in October of last year. The October 2014 DOM was at its lowest level compared with October of 2013 and 2012.

Average Days on Market(Listing to Contract) for properties sold during the month



© 2014 Coldwell Banker Real Estate LLC. All Rights Reserved. Coldwell Banker Residential Brokerage fully supports the principles of the Fair Housing Act and the Equal Opportunity Act. Coldwell Banker Residential Brokerage is operated by a subsidiary of NRT LLC. Coldwell Banker and the Coldwell Banker Logo are registered service marks owned by Coldwell Banker Real Estate LLC.

Based on information from Greater Fairfield County CMLS, Inc. for the period 11/1/2011 through 10/31/2014. Due to MLS reporting methods and allowable reporting policy, this data is only informational and may not be completely accurate. Therefore, Coldwell Banker Residential Brokerage does not guarantee the data accuracy. Data maintained by the MLS's may not reflect all real estate activity in the market.



City: Wilton



Joni Usdan
 Residential Real Estate Specialist
 203-216-7654
 www.jonihomes.com
 joni@jonihomes.com

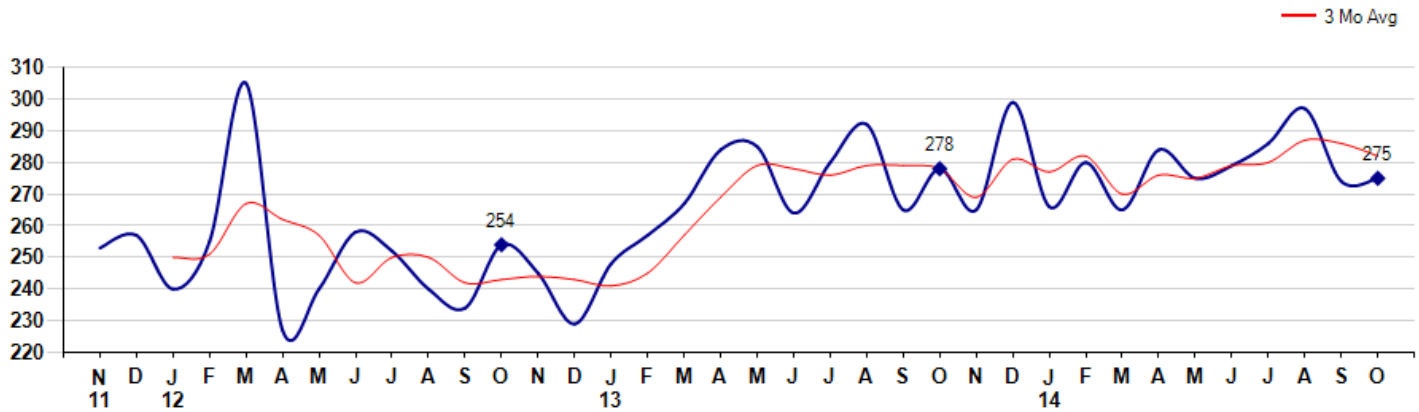


Price Range: \$0 to \$999,999,000 | Properties: Single Family Home

Selling Price per Square Foot

The Selling Price per Square Foot is a great indicator for the direction of Property values. Since Median Sales Price and Average Sales price can be impacted by the 'mix' of high or low end Properties in the market, the selling price per square foot is a more normalized indicator on the direction of Property values. The October 2014 Selling Price per Square Foot of \$275 was up 0.4% from \$274 last month and down -1.1% from \$278 in October of last year.

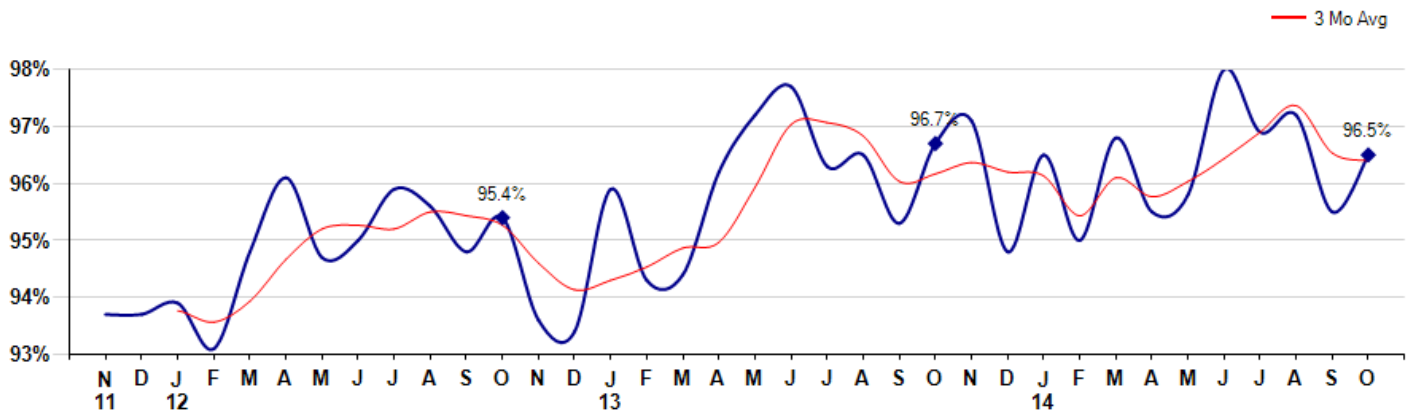
Average Selling Price per Square Foot for properties that sold during the month



Selling Price vs Listing Price

The Selling Price vs Listing Price reveals the average amount that Sellers are agreeing to come down from their list price. The lower the ratio is below 100% the more of a Buyer's market exists, a ratio at or above 100% indicates more of a Seller's market. The October 2014 Selling Price vs List Price of 96.5% was up from 95.5% last month and down from 96.7% in October of last year.

Avg Selling Price divided by Avg Listing Price for sold properties during the month



© 2014 Coldwell Banker Real Estate LLC. All Rights Reserved. Coldwell Banker Residential Brokerage fully supports the principles of the Fair Housing Act and the Equal Opportunity Act. Coldwell Banker Residential Brokerage is operated by a subsidiary of NRT LLC. Coldwell Banker and the Coldwell Banker Logo are registered service marks owned by Coldwell Banker Real Estate LLC.

Based on information from Greater Fairfield County CMLS, Inc. for the period 11/1/2011 through 10/31/2014. Due to MLS reporting methods and allowable reporting policy, this data is only informational and may not be completely accurate. Therefore, Coldwell Banker Residential Brokerage does not guarantee the data accuracy. Data maintained by the MLS's may not reflect all real estate activity in the market.



City: Wilton



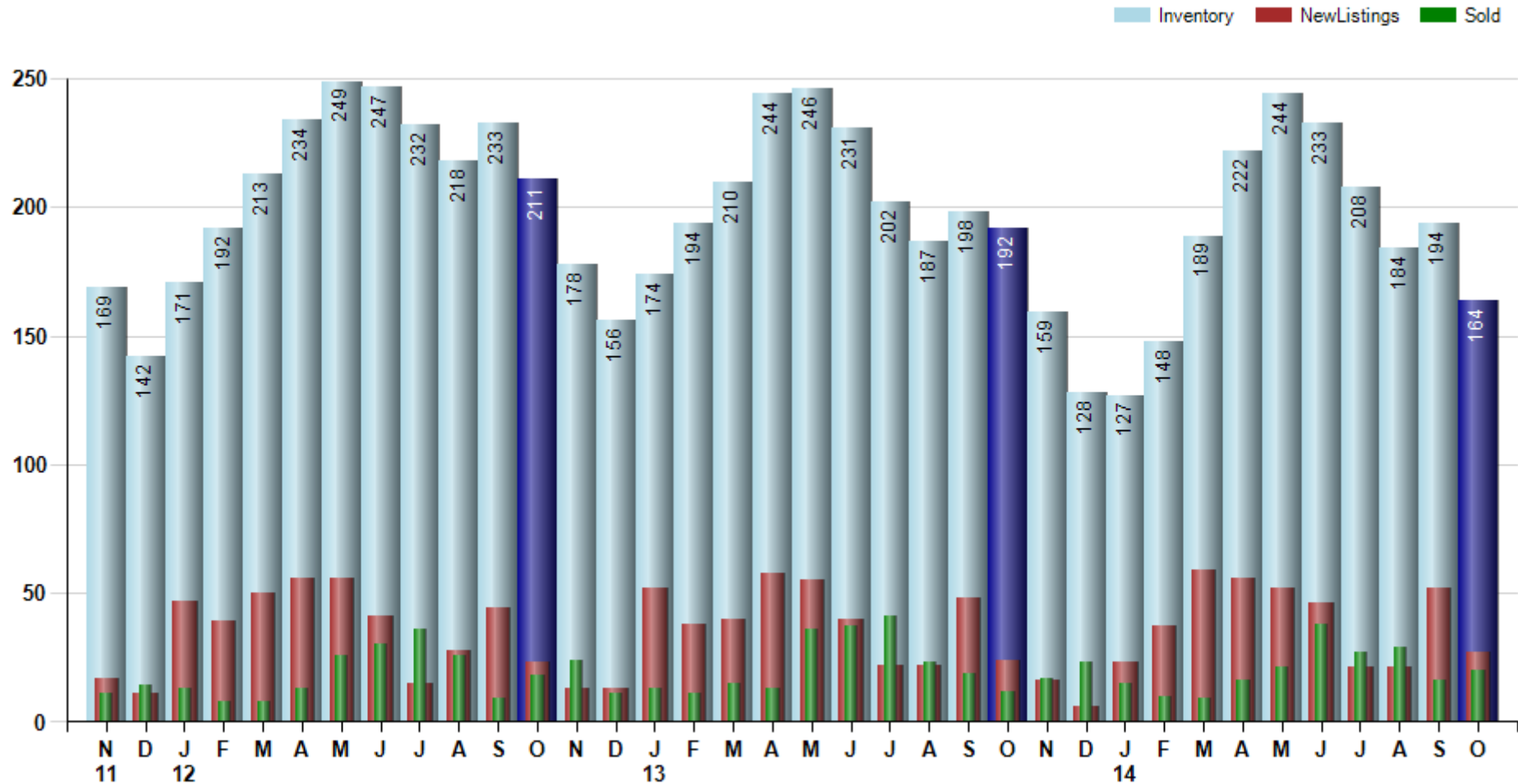
Joni Usdan
 Residential Real Estate Specialist
 203-216-7654
 www.jonihomes.com
 joni@jonihomes.com



Price Range: \$0 to \$999,999,000 | Properties: Single Family Home

Inventory / New Listings / Sales

This last view of the market combines monthly inventory of Properties for sale along with New Listings and Sales. The graph shows the basic annual seasonality of the market as well as the relationship between these items. The number of New Listings in October 2014 was 27, down -48.1% from 52 last month and up 12.5% from 24 in October of last year.



© 2014 Coldwell Banker Real Estate LLC. All Rights Reserved. Coldwell Banker Residential Brokerage fully supports the principles of the Fair Housing Act and the Equal Opportunity Act. Coldwell Banker Residential Brokerage is operated by a subsidiary of NRT LLC. Coldwell Banker and the Coldwell Banker Logo are registered service marks owned by Coldwell Banker Real Estate LLC.

Based on information from Greater Fairfield County CMLS, Inc. for the period 11/1/2011 through 10/31/2014. Due to MLS reporting methods and allowable reporting policy, this data is only informational and may not be completely accurate. Therefore, Coldwell Banker Residential Brokerage does not guarantee the data accuracy. Data maintained by the MLS's may not reflect all real estate activity in the market.

