

City: Fairfield



Joni Usdan
Residential Real Estate Specialist
203-216-7654
www.jonihomes.com
joni@jonihomes.com



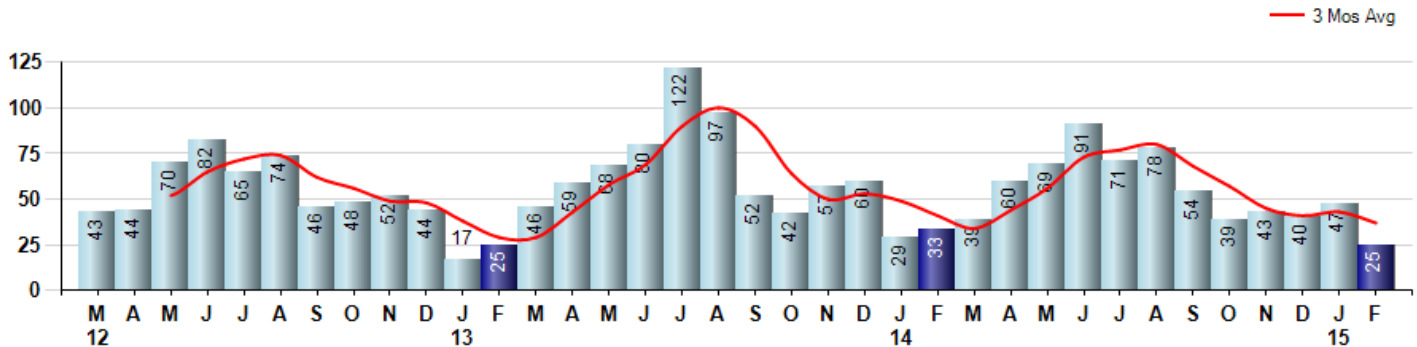
Price Range: \$0 to \$999,999,000 | Properties: Single Family Home

Market Profile & Trends Overview	Trending Versus*:					Trending Versus*:		
	Month	LM	L3M	PYM	LY	YTD	PriorYTD	PriorYear
Median List Price of all Current Listings	\$849,000	12%		17%				
Average List Price of all Current Listings	\$1,440,150	4%		10%				
February Median Sales Price	\$512,500	-10%	-9%	-6%	-10%	\$559,500	4%	-2%
February Average Sales Price	\$705,460	-22%	-13%	0%	-4%	\$838,017	12%	14%
Total Properties Currently for Sale (Inventory)	438	4%		-7%				
February Number of Properties Sold	25	-47%		-24%			16%	
February Average Days on Market (Solds)	105	-23%	-22%	-34%	-23%	125	-19%	-8%
Asking Price per Square Foot (based on New Listings)	\$368	2%	2%	4%	8%	\$365	7%	7%
February Sold Price per Square Foot	\$297	-3%	-3%	-5%	-3%	\$304	-4%	0%
February Month's Supply of Inventory	17.5	96%	40%	23%	56%	13.2	-9%	18%
February Sale Price vs List Price Ratio	97.4%	1.0%	3%	0%	1.8%	95.5%	0.3%	-0.2%

* LM=Last Month / L3M=Last 3 Months / PYM=Same Month Prior Year / LY=Last Year / YTD = Year-to-date

Property Sales

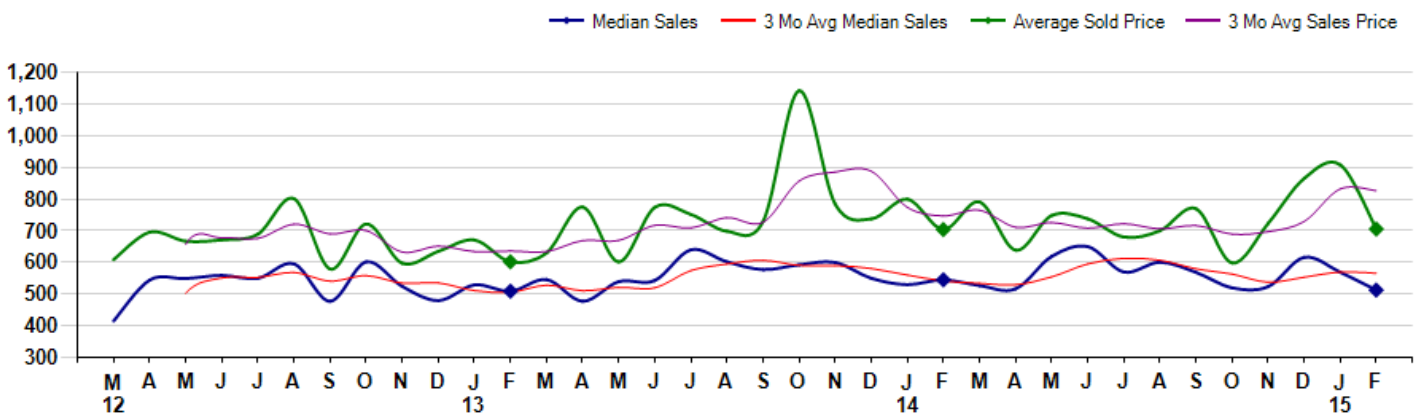
February Property sales were 25, down -24.2% from 33 in February of 2014 and -46.8% lower than the 47 sales last month. February 2015 sales were at their lowest level compared to February of 2014 and 2013. February YTD sales of 72 are running 16.1% ahead of last year's year-to-date sales of 62.



Prices

The Median Sales Price in February was \$512,500, down -6.0% from \$545,000 in February of 2014 and down -9.9% from \$569,000 last month. The Average Sales Price in February was \$705,460, up 0.2% from \$703,782 in February of 2014 and down -22.4% from \$908,526 last month. February 2015 ASP was at highest level compared to February of 2014 and 2013.

Median means Middle (the same # of properties sold above and below Median) (000's)



City: *Fairfield*



Joni Usdan
 Residential Real Estate Specialist
 203-216-7654
 www.jonihomes.com
 joni@jonihomes.com



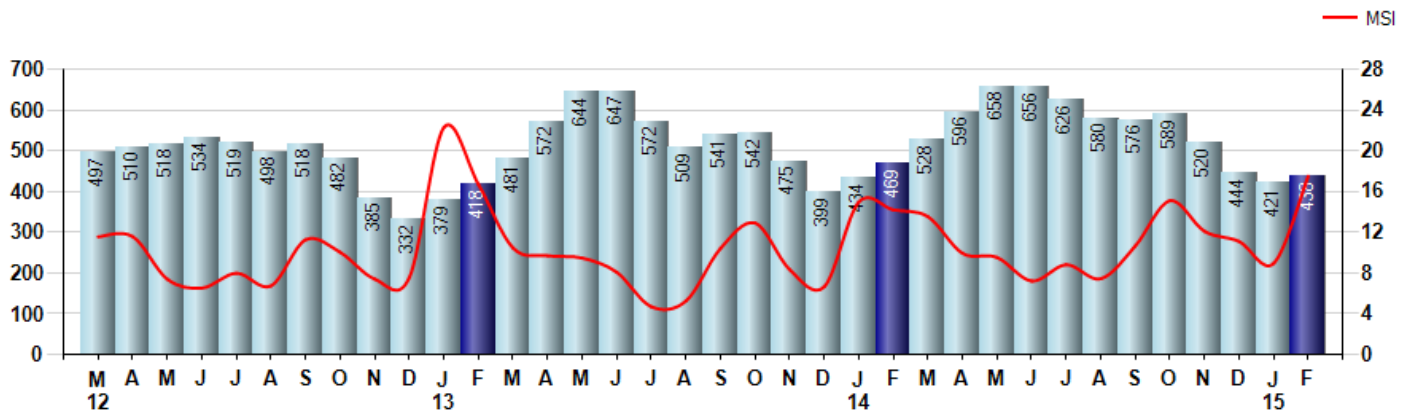
Price Range: \$0 to \$999,999,000 | Properties: Single Family Home

Inventory & MSI

The Total Inventory of Properties available for sale as of February was 438, up 4.0% from 421 last month and down -6.6% from 469 in February of last year. February 2015 Inventory was at a mid range compared to February of 2014 and 2013.

A comparatively lower MSI is more beneficial for sellers while a higher MSI is better for buyers. The February 2015 MSI of 17.5 months was at its highest level compared with February of 2014 and 2013.

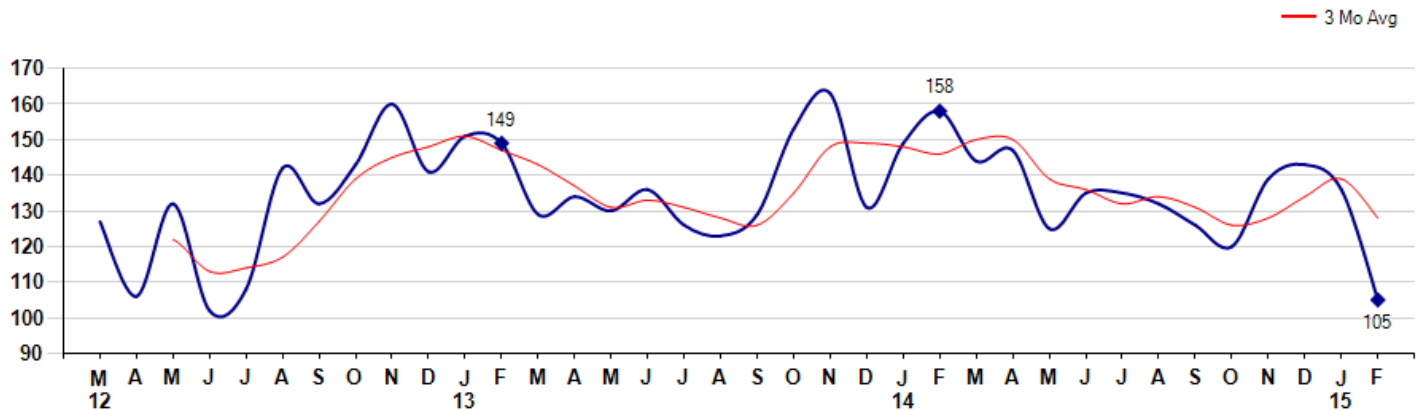
MSI is the # of months needed to sell all of the Inventory at the monthly Sales Pace



Market Time

The average Days On Market(DOM) shows how many days the average Property is on the Market before it sells. An upward trend in DOM tends to indicate a move towards more of a Buyer's market, a downward trend a move towards more of a Seller's market. The DOM for February was 105, down -22.8% from 136 days last month and down -33.5% from 158 days in February of last year. The February 2015 DOM was at its lowest level compared with February of 2014 and 2013.

Average Days on Market(Listing to Contract) for properties sold during the month



© 2015 Coldwell Banker Real Estate LLC. All Rights Reserved. Coldwell Banker Residential Brokerage fully supports the principles of the Fair Housing Act and the Equal Opportunity Act. Coldwell Banker Residential Brokerage is operated by a subsidiary of NRT LLC. Coldwell Banker and the Coldwell Banker Logo are registered service marks owned by Coldwell Banker Real Estate LLC.

Based on information from Greater Fairfield County CMLS, Inc. for the period 3/1/2012 through 2/28/2015. Due to MLS reporting methods and allowable reporting policy, this data is only informational and may not be completely accurate. Therefore, Coldwell Banker Residential Brokerage does not guarantee the data accuracy. Data maintained by the MLS's may not reflect all real estate activity in the market.



City: *Fairfield*



Joni Usdan
 Residential Real Estate Specialist
 203-216-7654
 www.jonihomes.com
 joni@jonihomes.com

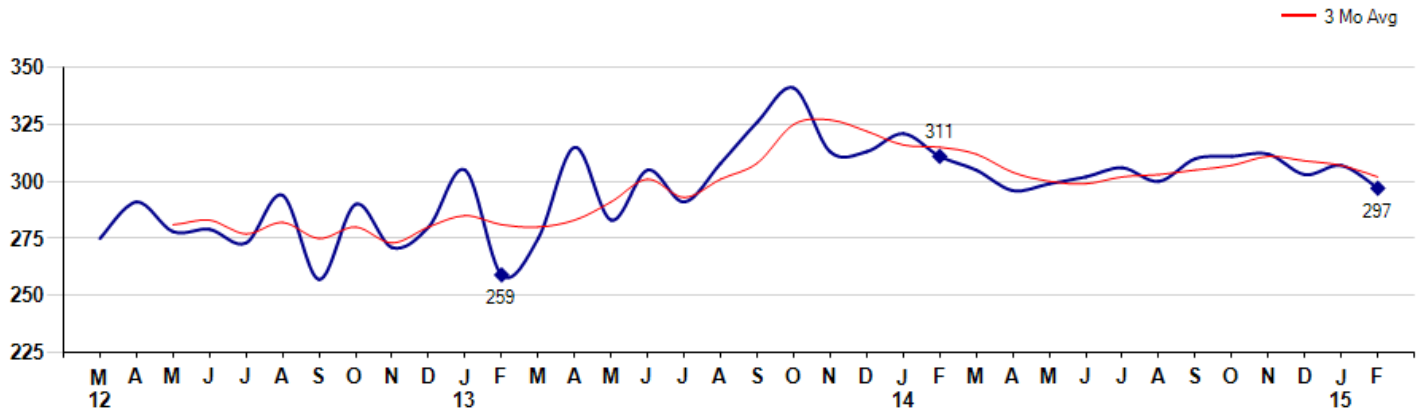


Price Range: \$0 to \$999,999,000 | Properties: Single Family Home

Selling Price per Square Foot

The Selling Price per Square Foot is a great indicator for the direction of Property values. Since Median Sales Price and Average Sales price can be impacted by the 'mix' of high or low end Properties in the market, the selling price per square foot is a more normalized indicator on the direction of Property values. The February 2015 Selling Price per Square Foot of \$297 was down -3.3% from \$307 last month and down -4.5% from \$311 in February of last year.

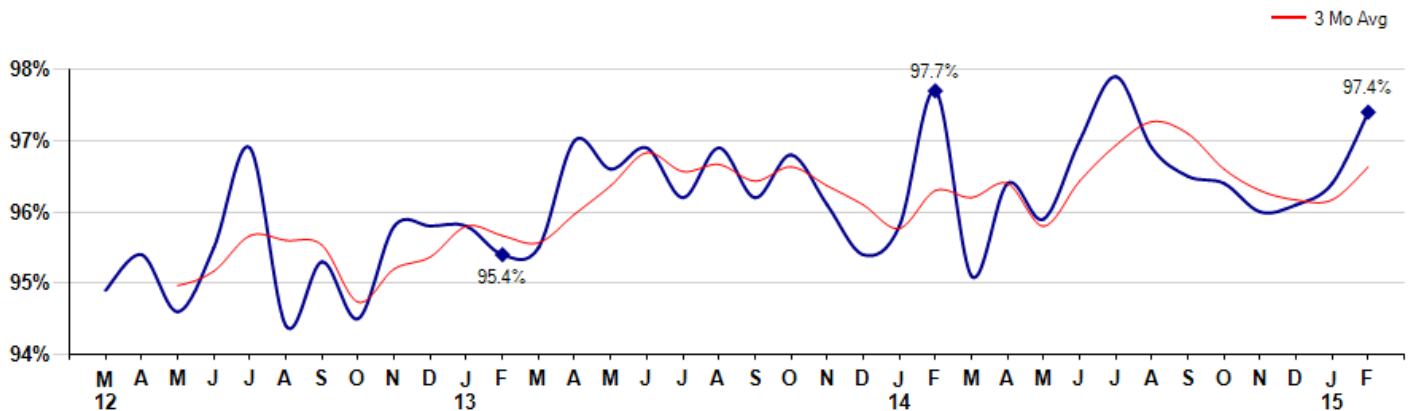
Average Selling Price per Square Foot for properties that sold during the month



Selling Price vs Listing Price

The Selling Price vs Listing Price reveals the average amount that Sellers are agreeing to come down from their list price. The lower the ratio is below 100% the more of a Buyer's market exists, a ratio at or above 100% indicates more of a Seller's market. The February 2015 Selling Price vs List Price of 97.4% was up from 96.4% last month and down from 97.7% in February of last year.

Avg Selling Price divided by Avg Listing Price for sold properties during the month



© 2015 Coldwell Banker Real Estate LLC. All Rights Reserved. Coldwell Banker Residential Brokerage fully supports the principles of the Fair Housing Act and the Equal Opportunity Act. Coldwell Banker Residential Brokerage is operated by a subsidiary of NRT LLC. Coldwell Banker and the Coldwell Banker Logo are registered service marks owned by Coldwell Banker Real Estate LLC.

Based on information from Greater Fairfield County CMLS, Inc. for the period 3/1/2012 through 2/28/2015. Due to MLS reporting methods and allowable reporting policy, this data is only informational and may not be completely accurate. Therefore, Coldwell Banker Residential Brokerage does not guarantee the data accuracy. Data maintained by the MLS's may not reflect all real estate activity in the market.



City: *Fairfield*



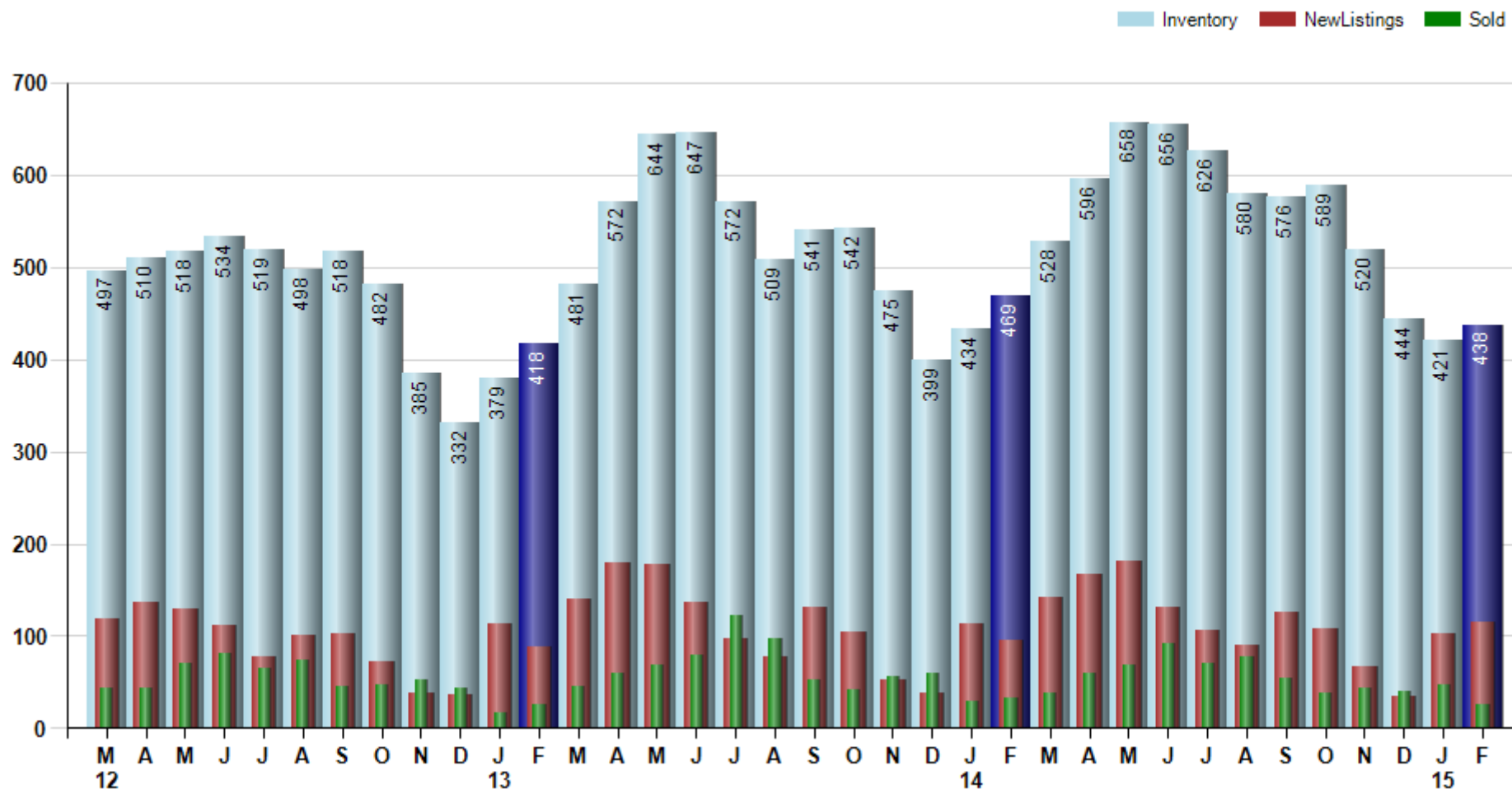
Joni Usdan
 Residential Real Estate Specialist
 203-216-7654
 www.jonihomes.com
 joni@jonihomes.com



Price Range: \$0 to \$999,999,000 | Properties: Single Family Home

Inventory / New Listings / Sales

This last view of the market combines monthly inventory of Properties for sale along with New Listings and Sales. The graph shows the basic annual seasonality of the market as well as the relationship between these items. The number of New Listings in February 2015 was 116, up 12.6% from 103 last month and up 22.1% from 95 in February of last year.



© 2015 Coldwell Banker Real Estate LLC. All Rights Reserved. Coldwell Banker Residential Brokerage fully supports the principles of the Fair Housing Act and the Equal Opportunity Act. Coldwell Banker Residential Brokerage is operated by a subsidiary of NRT LLC. Coldwell Banker and the Coldwell Banker Logo are registered service marks owned by Coldwell Banker Real Estate LLC.

Based on information from Greater Fairfield County CMLS, Inc. for the period 3/1/2012 through 2/28/2015. Due to MLS reporting methods and allowable reporting policy, this data is only informational and may not be completely accurate. Therefore, Coldwell Banker Residential Brokerage does not guarantee the data accuracy. Data maintained by the MLS's may not reflect all real estate activity in the market.

