

MLS Area: Southport



Joni Usdan

Residential Real Estate Specialist

203-216-7654

www.jonihomes.com

joni@jonihomes.com



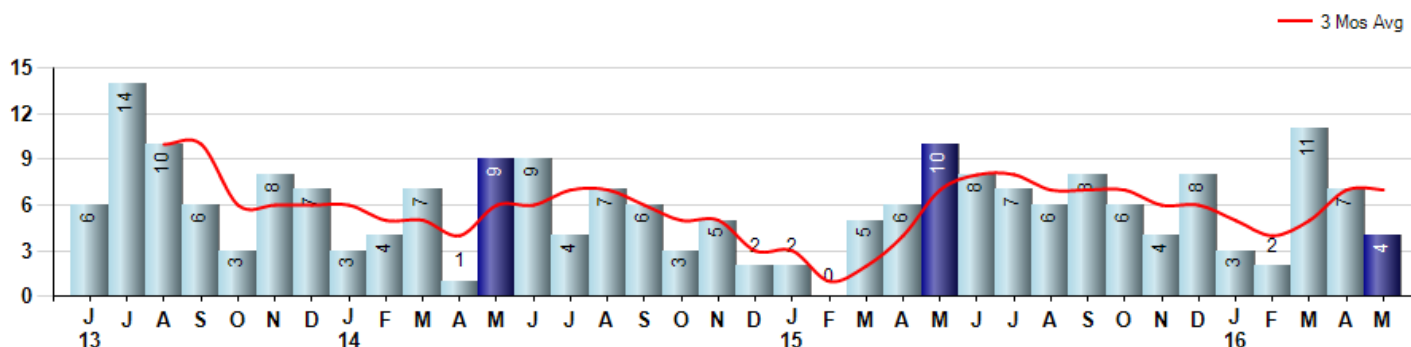
Price Range: \$0 to \$999,999,000 | Properties: Single Family Home

Market Profile & Trends Overview	Month	Trending Versus*:				YTD	Trending Versus*:	
		LM	L3M	PYM	LY		PriorYTD	PriorYear
Median List Price of all Current Listings	\$1,130,000	3%		-11%				
Average List Price of all Current Listings	\$1,655,347	1%		-8%				
May Median Sales Price	\$498,500	-50%	-39%	-35%	-43%	\$880,000	7%	1%
May Average Sales Price	\$518,250	-43%	-43%	-33%	-52%	\$978,213	-7%	-9%
Total Properties Currently for Sale (Inventory)	77	9%		-3%				
May Number of Properties Sold	4	-43%		-60%			17%	
May Average Days on Market (Solds)	152	1%	-17%	13%	-18%	184	3%	-1%
Asking Price per Square Foot (based on New Listings)	\$433	1%	-1%	12%	7%	\$418	-2%	4%
May Sold Price per Square Foot	\$348	9%	5%	2%	-3%	\$341	-3%	-5%
May Month's Supply of Inventory	19.3	90%	60%	144%	67%	18.9	70%	64%
May Sale Price vs List Price Ratio	97.9%	-0.1%	3%	0%	2.6%	95.0%	-0.9%	-0.5%

* LM=Last Month / L3M=Last 3 Months / PYM=Same Month Prior Year / LY=Last Year / YTD = Year-to-date

Property Sales

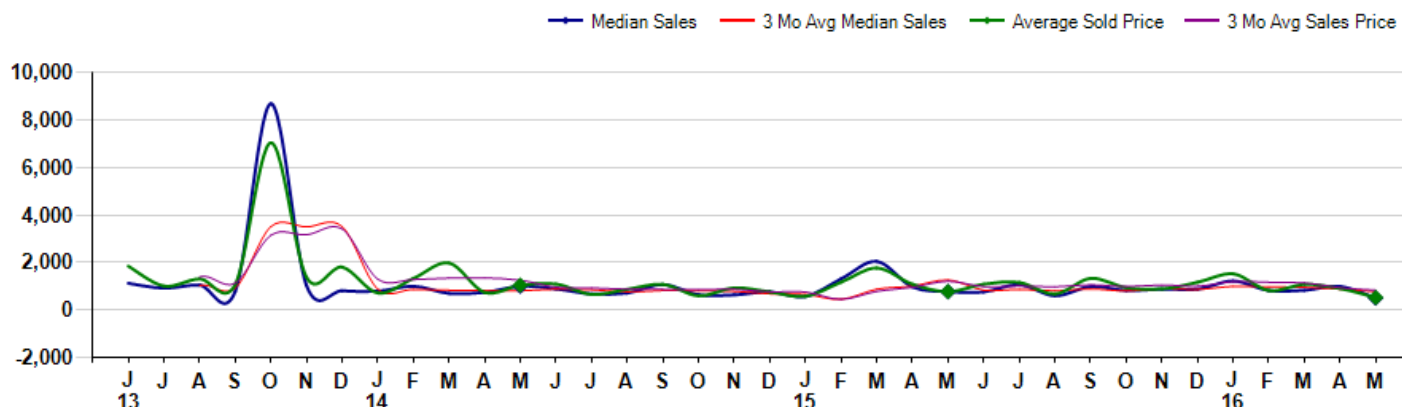
May Property sales were 4, down -60.0% from 10 in May of 2015 and -42.9% lower than the 7 sales last month. May 2016 sales were at their lowest level compared to May of 2015 and 2014. May YTD sales of 27 are running 17.4% ahead of last year's year-to-date sales of 23.



Prices

The Median Sales Price in May was \$498,500, down -35.1% from \$768,375 in May of 2015 and down -49.6% from \$990,000 last month. The Average Sales Price in May was \$518,250, down -32.8% from \$770,675 in May of 2015 and down -42.6% from \$902,429 last month. May 2016 ASP was at the lowest level compared to May of 2015 and 2014.

Median means Middle (the same # of properties sold above and below Median) (000's)



MLS Area: Southport

Price Range: \$0 to \$999,999,000 | Properties: Single Family Home



Joni Usdan
Residential Real Estate Specialist
203-216-7654
www.jonihomes.com
joni@jonihomes.com

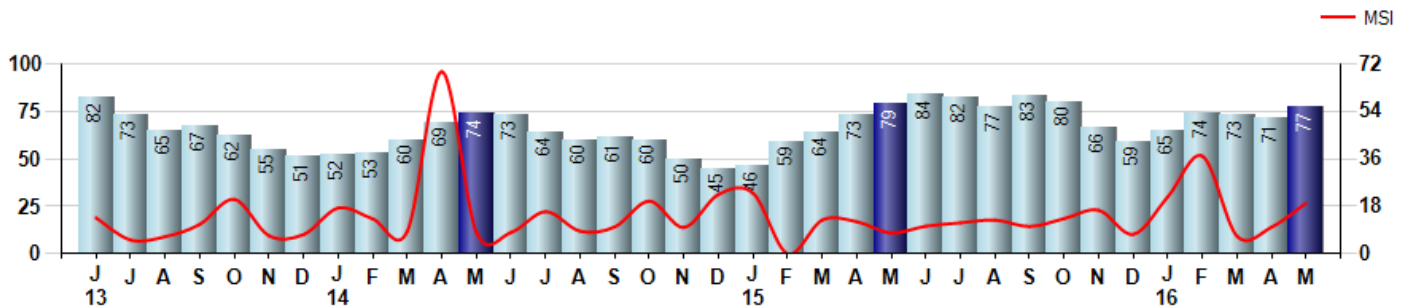


Inventory & MSI

The Total Inventory of Properties available for sale as of May was 77, up 8.5% from 71 last month and down -2.5% from 79 in May of last year. May 2016 Inventory was at a mid range compared to May of 2015 and 2014.

A comparatively lower MSI is more beneficial for sellers while a higher MSI is better for buyers. The May 2016 MSI of 19.3 months was at its highest level compared with May of 2015 and 2014.

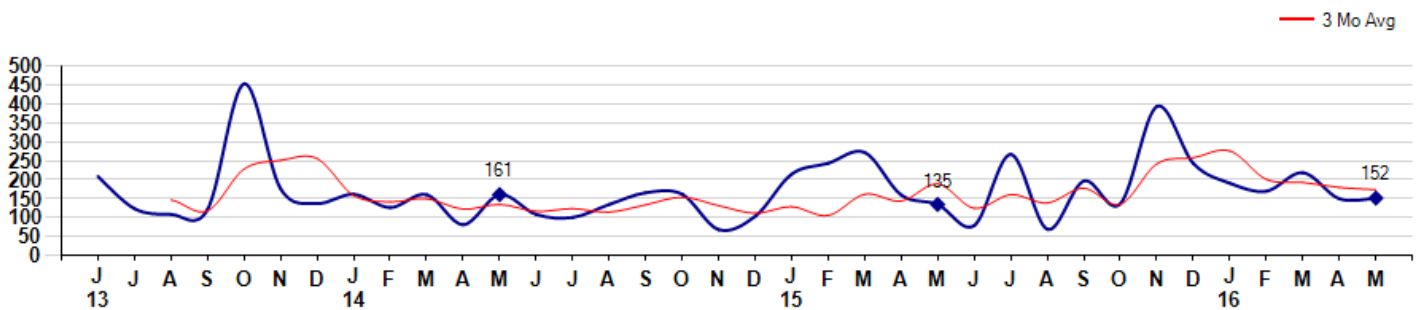
MSI is the # of months needed to sell all of the Inventory at the monthly Sales Pace



Market Time

The average Days On Market(DOM) shows how many days the average Property is on the Market before it sells. An upward trend in DOM tends to indicate a move towards more of a Buyer's market, a downward trend a move towards more of a Seller's market. The DOM for May was 152, up 1.3% from 150 days last month and up 12.6% from 135 days in May of last year. The May 2016 DOM was at a mid range compared with May of 2015 and 2014.

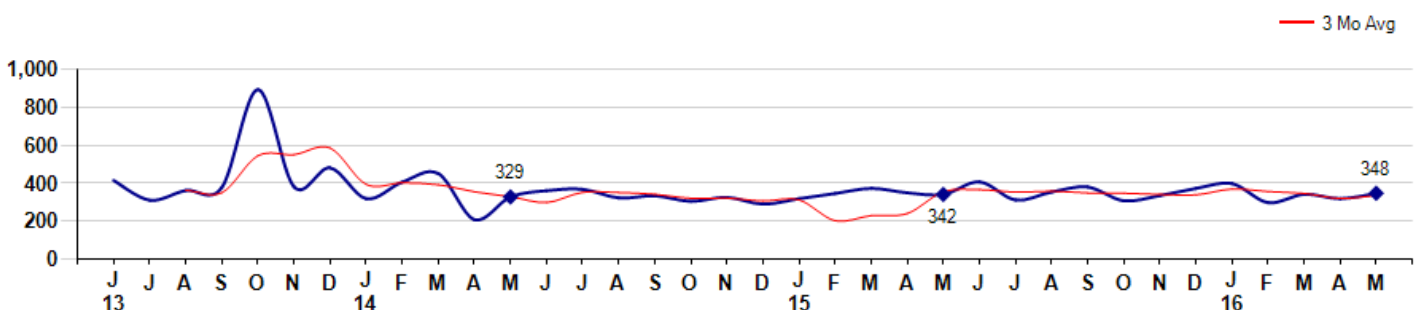
Average Days on Market(Listing to Contract) for properties sold during the month



Selling Price per Square Foot

The Selling Price per Square Foot is a great indicator for the direction of Property values. Since Median Sales Price and Average Sales price can be impacted by the 'mix' of high or low end Properties in the market, the selling price per square foot is a more normalized indicator on the direction of Property values. The May 2016 Selling Price per Square Foot of \$348 was up 8.7% from \$320 last month and up 1.8% from \$342 in May of last year.

Average Selling Price per Square Foot for properties that sold during the month



MLS Area: Southport



Joni Usdan
Residential Real Estate Specialist
203-216-7654
www.jonihomes.com
joni@jonihomes.com

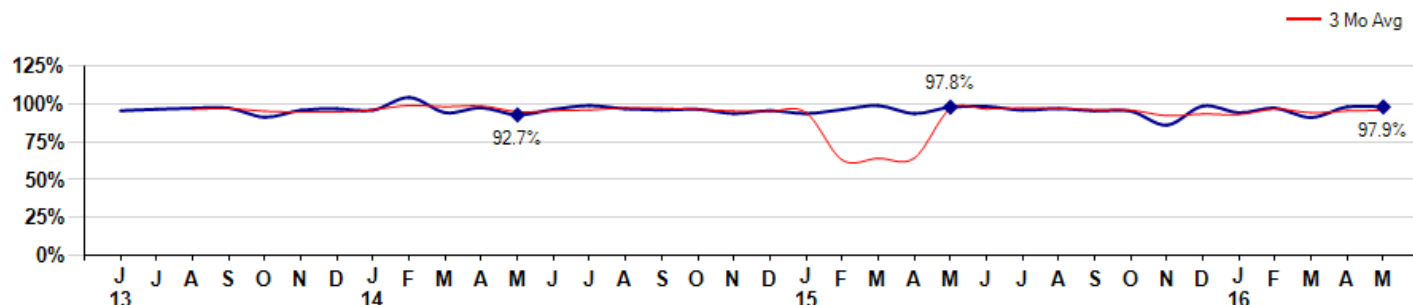


Price Range: \$0 to \$999,999,000 | Properties: Single Family Home

Selling Price vs Listing Price

The Selling Price vs Listing Price reveals the average amount that Sellers are agreeing to come down from their list price. The lower the ratio is below 100% the more of a Buyer's market exists, a ratio at or above 100% indicates more of a Seller's market. The May 2016 Selling Price vs List Price of 97.9% was down from 98.0% last month and up from 97.8% in May of last year.

Avg Selling Price divided by Avg Listing Price for sold properties during the month



Inventory / New Listings / Sales

This last view of the market combines monthly inventory of Properties for sale along with New Listings and Sales. The graph shows the basic annual seasonality of the market as well as the relationship between these items. The number of New Listings in May 2016 was 20, up 81.8% from 11 last month and up 11.1% from 18 in May of last year.

Inventory NewListings Sold

