

City: Weston



Joni Usdan
Residential Real Estate Specialist
203-216-7654
www.jonihomes.com
joni@jonihomes.com



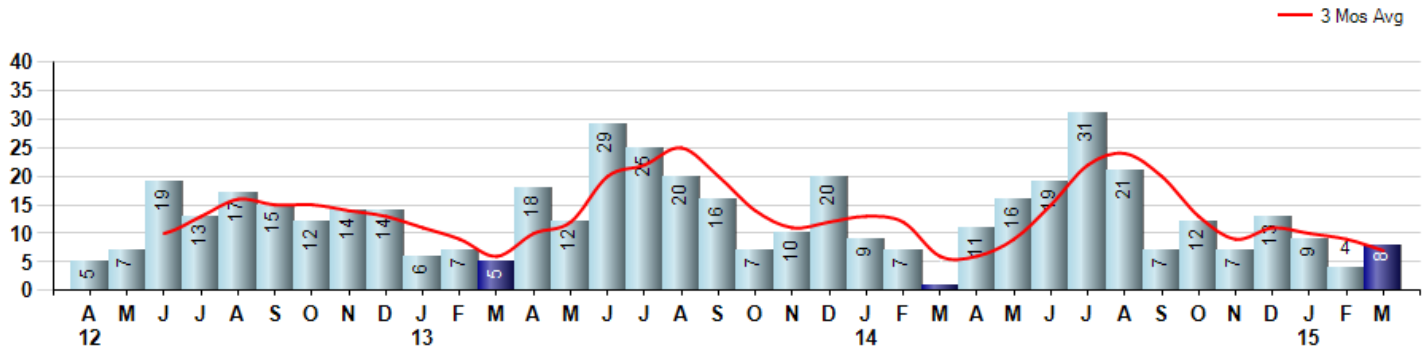
Price Range: \$0 to \$999,999,000 | Properties: Single Family Home

Market Profile & Trends Overview	Month	Trending Versus*:				Trending Versus*:		
		LM	L3M	PYM	LY	YTD	PriorYTD	PriorYear
Median List Price of all Current Listings	\$1,179,000	0%		19%				
Average List Price of all Current Listings	\$1,384,675	1%		15%				
March Median Sales Price	\$645,000	16%	-16%	-1%	-21%	\$655,000	-21%	-20%
March Average Sales Price	\$885,250	55%	2%	36%	-1%	\$843,424	-17%	-6%
Total Properties Currently for Sale (Inventory)	133	5%		-24%				
March Number of Properties Sold	8	100%		700%			24%	
March Average Days on Market (Solds)	188	-48%	-3%	19%	10%	230	16%	35%
Asking Price per Square Foot (based on New Listings)	\$275	-7%	-5%	0%	-5%	\$287	-4%	-1%
March Sold Price per Square Foot	\$301	33%	19%	51%	17%	\$255	1%	-1%
March Month's Supply of Inventory	16.6	-48%	-18%	-90%	-40%	20.4	-71%	-27%
March Sale Price vs List Price Ratio	97.2%	4.3%	1%	5%	1.8%	96.6%	0.5%	1.2%

* LM=Last Month / L3M=Last 3 Months / PYM=Same Month Prior Year / LY=Last Year / YTD = Year-to-date

Property Sales

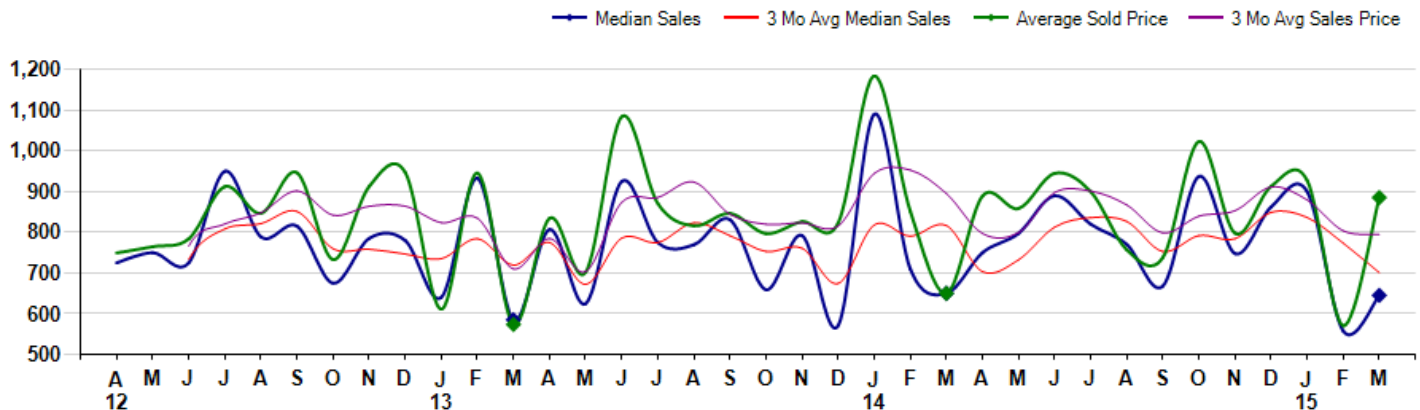
March Property sales were 8, up 700.0% from 1 in March of 2014 and 100.0% higher than the 4 sales last month. March 2015 sales were at their highest level compared to March of 2014 and 2013. March YTD sales of 21 are running 23.5% ahead of last year's year-to-date sales of 17.



Prices

The Median Sales Price in March was \$645,000, down -0.8% from \$650,000 in March of 2014 and up 15.7% from \$557,500 last month. The Average Sales Price in March was \$885,250, up 36.2% from \$650,000 in March of 2014 and up 55.1% from \$570,750 last month. March 2015 ASP was at highest level compared to March of 2014 and 2013.

Median means Middle (the same # of properties sold above and below Median) (000's)



City: Weston



Joni Usdan
Residential Real Estate Specialist
203-216-7654
www.jonihomes.com
joni@jonihomes.com



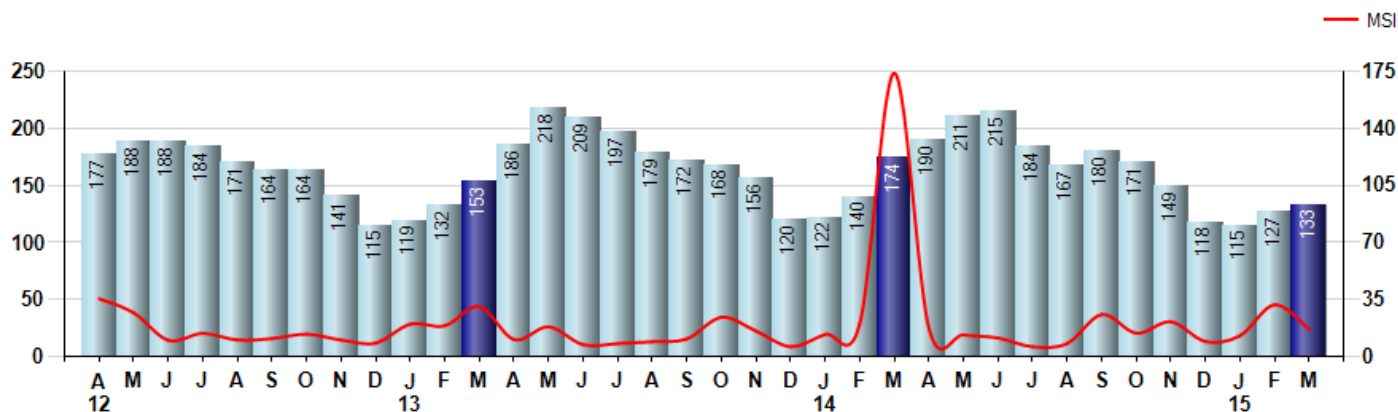
Price Range: \$0 to \$999,999,000 | Properties: Single Family Home

Inventory & MSI

The Total Inventory of Properties available for sale as of March was 133, up 4.7% from 127 last month and down -23.6% from 174 in March of last year. March 2015 Inventory was at the lowest level compared to March of 2014 and 2013.

A comparatively lower MSI is more beneficial for sellers while a higher MSI is better for buyers. The March 2015 MSI of 16.6 months was at its lowest level compared with March of 2014 and 2013.

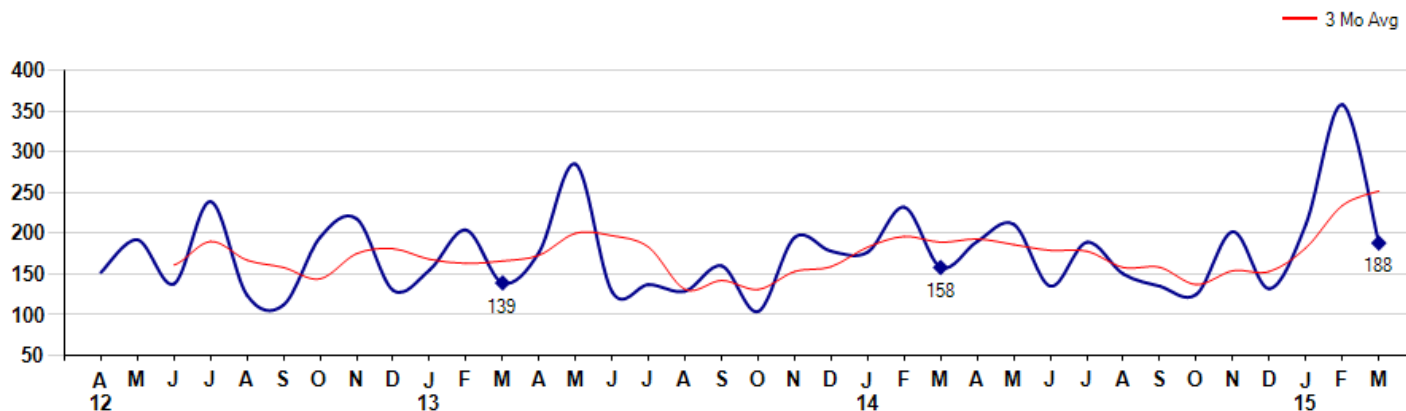
MSI is the # of months needed to sell all of the Inventory at the monthly Sales Pace



Market Time

The average Days On Market(DOM) shows how many days the average Property is on the Market before it sells. An upward trend in DOM tends to indicate a move towards more of a Buyer's market, a downward trend a move towards more of a Seller's market. The DOM for March was 188, down -47.5% from 358 days last month and up 19.0% from 158 days in March of last year. The March 2015 DOM was at its highest level compared with March of 2014 and 2013.

Average Days on Market(Listing to Contract) for properties sold during the month



© 2015 Coldwell Banker Real Estate LLC. All Rights Reserved. Coldwell Banker Residential Brokerage fully supports the principles of the Fair Housing Act and the Equal Opportunity Act. Coldwell Banker Residential Brokerage is operated by a subsidiary of NRT LLC. Coldwell Banker and the Coldwell Banker Logo are registered service marks owned by Coldwell Banker Real Estate LLC.

Based on information from Greater Fairfield County CMLS, Inc. for the period 4/1/2012 through 3/31/2015. Due to MLS reporting methods and allowable reporting policy, this data is only informational and may not be completely accurate. Therefore, Coldwell Banker Residential Brokerage does not guarantee the data accuracy. Data maintained by the MLS's may not reflect all real estate activity in the market.



City: Weston



Joni Usdan
 Residential Real Estate Specialist
 203-216-7654
 www.jonihomes.com
 joni@jonihomes.com

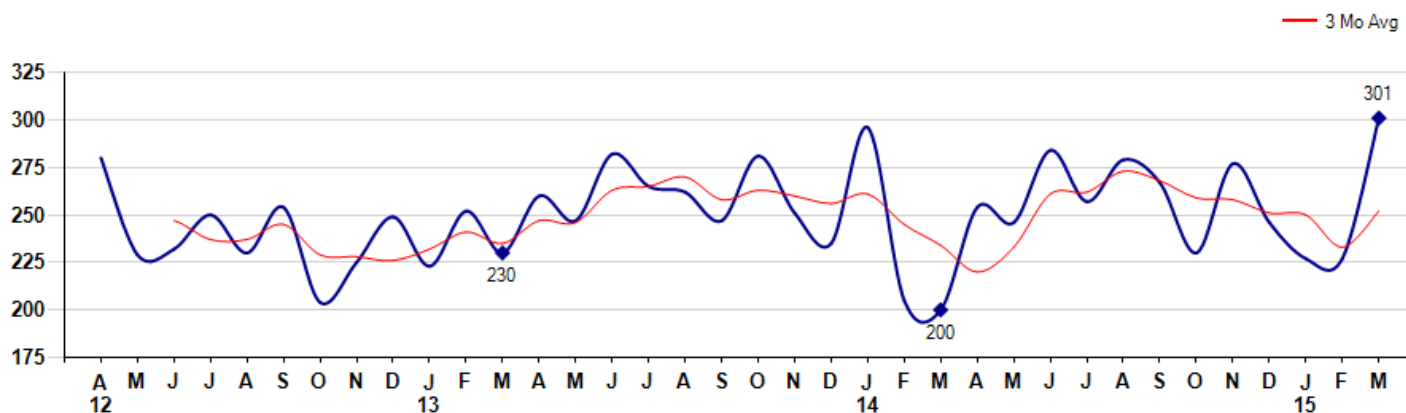


Price Range: \$0 to \$999,999,000 | Properties: Single Family Home

Selling Price per Square Foot

The Selling Price per Square Foot is a great indicator for the direction of Property values. Since Median Sales Price and Average Sales price can be impacted by the 'mix' of high or low end Properties in the market, the selling price per square foot is a more normalized indicator on the direction of Property values. The March 2015 Selling Price per Square Foot of \$301 was up 32.6% from \$227 last month and up 50.5% from \$200 in March of last year.

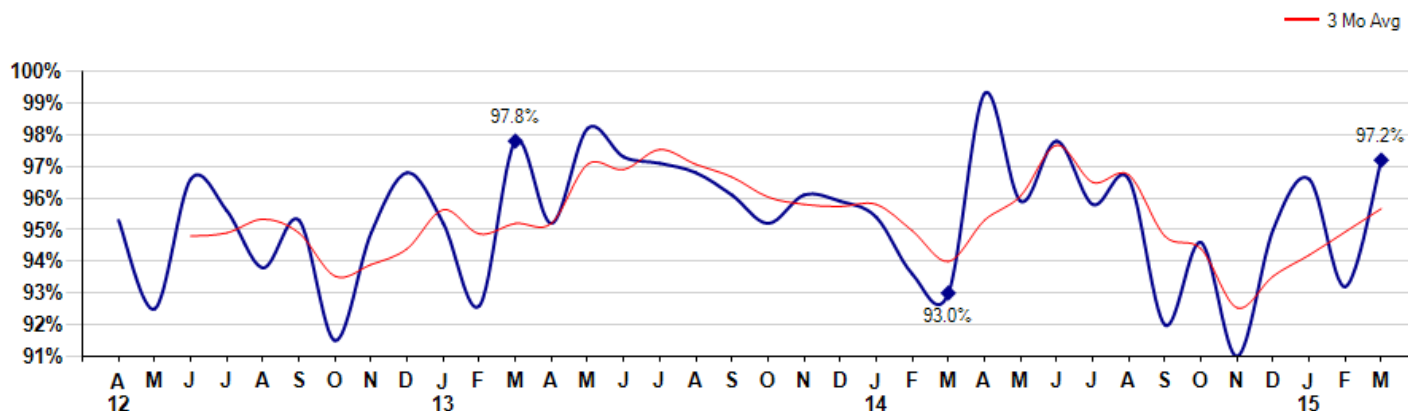
Average Selling Price per Square Foot for properties that sold during the month



Selling Price vs Listing Price

The Selling Price vs Listing Price reveals the average amount that Sellers are agreeing to come down from their list price. The lower the ratio is below 100% the more of a Buyer's market exists, a ratio at or above 100% indicates more of a Seller's market. The March 2015 Selling Price vs List Price of 97.2% was up from 93.2% last month and up from 93.0% in March of last year.

Avg Selling Price divided by Avg Listing Price for sold properties during the month



© 2015 Coldwell Banker Real Estate LLC. All Rights Reserved. Coldwell Banker Residential Brokerage fully supports the principles of the Fair Housing Act and the Equal Opportunity Act. Coldwell Banker Residential Brokerage is operated by a subsidiary of NRT LLC. Coldwell Banker and the Coldwell Banker Logo are registered service marks owned by Coldwell Banker Real Estate LLC.

Based on information from Greater Fairfield County CMLS, Inc. for the period 4/1/2012 through 3/31/2015. Due to MLS reporting methods and allowable reporting policy, this data is only informational and may not be completely accurate. Therefore, Coldwell Banker Residential Brokerage does not guarantee the data accuracy. Data maintained by the MLS's may not reflect all real estate activity in the market.



City: *Weston*



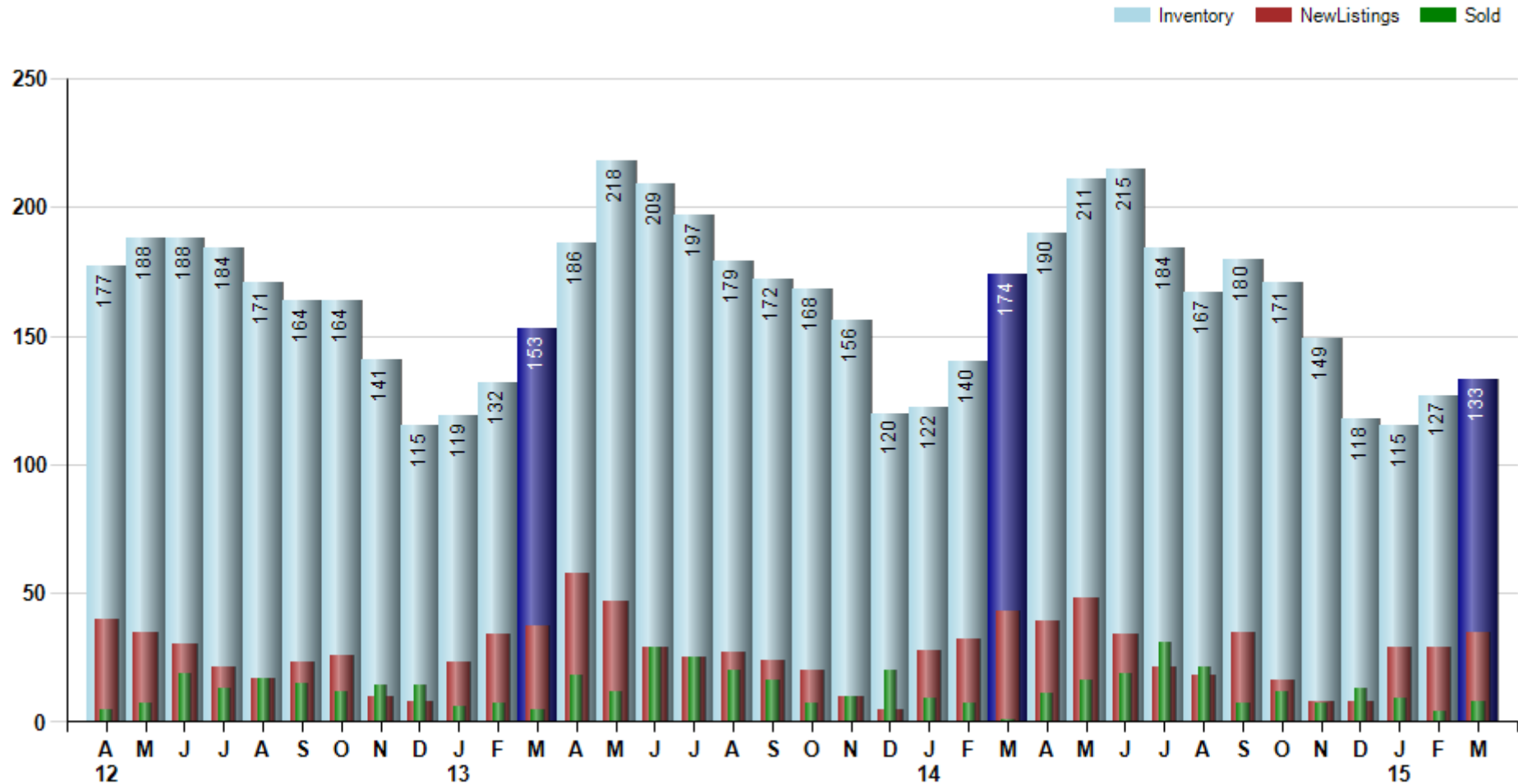
Joni Usdan
 Residential Real Estate Specialist
 203-216-7654
 www.jonihomes.com
 joni@jonihomes.com



Price Range: \$0 to \$999,999,000 | Properties: Single Family Home

Inventory / New Listings / Sales

This last view of the market combines monthly inventory of Properties for sale along with New Listings and Sales. The graph shows the basic annual seasonality of the market as well as the relationship between these items. The number of New Listings in March 2015 was 35, up 20.7% from 29 last month and down -18.6% from 43 in March of last year.



© 2015 Coldwell Banker Real Estate LLC. All Rights Reserved. Coldwell Banker Residential Brokerage fully supports the principles of the Fair Housing Act and the Equal Opportunity Act. Coldwell Banker Residential Brokerage is operated by a subsidiary of NRT LLC. Coldwell Banker and the Coldwell Banker Logo are registered service marks owned by Coldwell Banker Real Estate LLC.

Based on information from Greater Fairfield County CMLS, Inc. for the period 4/1/2012 through 3/31/2015. Due to MLS reporting methods and allowable reporting policy, this data is only informational and may not be completely accurate. Therefore, Coldwell Banker Residential Brokerage does not guarantee the data accuracy. Data maintained by the MLS's may not reflect all real estate activity in the market.

