

## City: Fairfield



**Joni Usdan**  
Residential Real Estate Specialist  
2032167654  
www.jonihomes.com  
joni@jonihomes.com



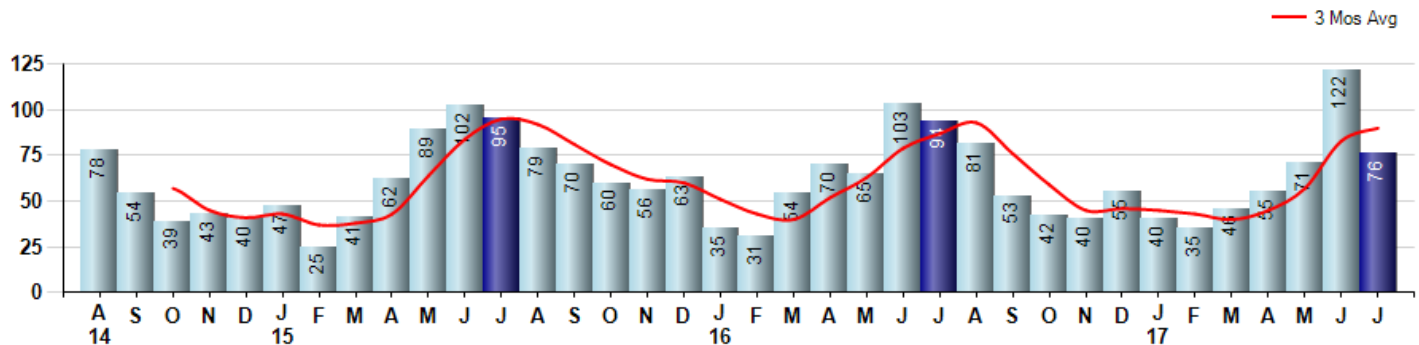
Price Range: 0 to 999999999 | Properties: Single Family Home

Market Profile & Trends Overview	Month	Trending Versus*:				Trending Versus*:		
		LM	L3M	PYM	LY	YTD	PriorYTD	PriorYear
Median List Price of all Current Listings	\$800,000	0%		1%				
Average List Price of all Current Listings	\$1,095,122	5%		1%				
July Median Sales Price	\$588,750	-12%	-3%	-6%	-2%	\$615,000	3%	3%
July Average Sales Price	\$691,986	-8%	-4%	-5%	-2%	\$739,385	5%	4%
Total Properties Currently for Sale (Inventory)	521	-16%		-17%				
July Number of Properties Sold	76	-38%		-19%			-2%	
July Average Days on Market (Solds)	128	6%	1%	-1%	-11%	130	-12%	-9%
Asking Price per Square Foot (based on New Listings)	\$326	-7%	-3%	3%	0%	\$333	1%	2%
July Sold Price per Square Foot	\$301	-3%	-2%	0%	0%	\$308	3%	3%
July Month's Supply of Inventory	6.9	35%	-6%	3%	-37%	10.0	-12%	-8%
July Sale Price vs List Price Ratio	94.4%	-0.2%	0%	1%	2.0%	94.1%	1.1%	1.7%

\* LM=Last Month / L3M=Last 3 Months / PYM=Same Month Prior Year / LY=Last Year / YTD = Year-to-date

### Property Sales

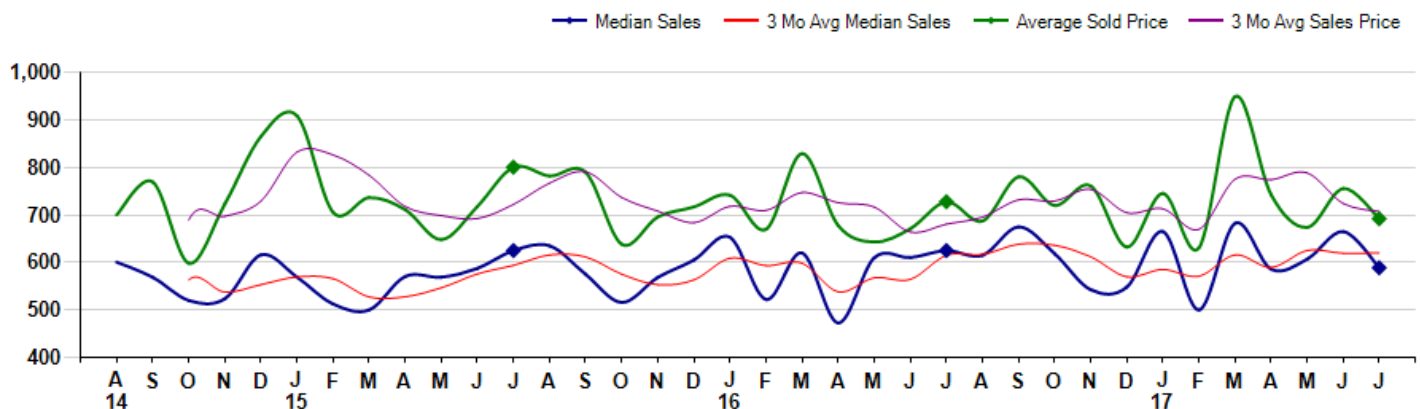
July Property sales were 76, down -19.1% from 94 in July of 2016 and -37.7% lower than the 122 sales last month. July 2017 sales were at their lowest level compared to July of 2016 and 2015. July YTD sales of 445 are running -1.5% behind last year's year-to-date sales of 452.



### Prices

The Median Sales Price in July was \$588,750, down -5.8% from \$625,000 in July of 2016 and down -11.5% from \$665,000 last month. The Average Sales Price in July was \$691,986, down -4.9% from \$727,807 in July of 2016 and down -8.4% from \$755,592 last month. July 2017 ASP was at the lowest level compared to July of 2016 and 2015.

Median means Middle (the same # of properties sold above and below Median) (000's)



## City: *Fairfield*



**Joni Usdan**  
Residential Real Estate Specialist  
2032167654  
www.jonihomes.com  
joni@jonihomes.com



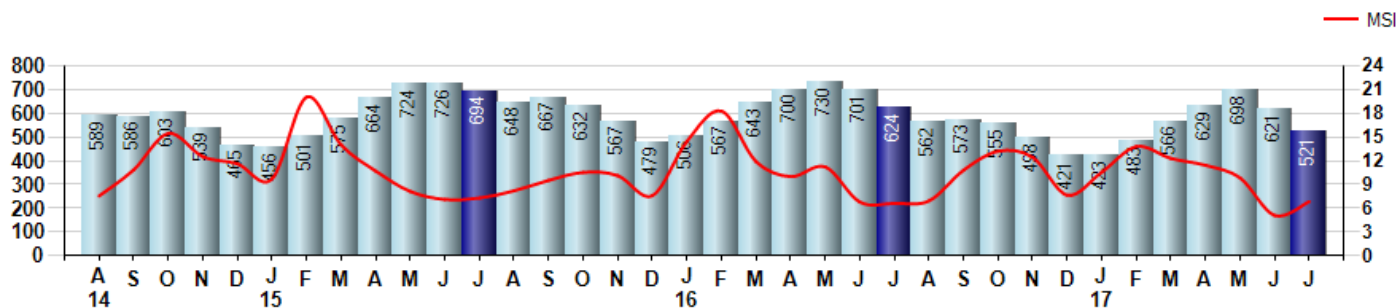
Price Range: 0 to 999999999 | Properties: Single Family Home

### Inventory & MSI

The Total Inventory of Properties available for sale as of July was 521, down -16.1% from 621 last month and down -16.5% from 624 in July of last year. July 2017 Inventory was at the lowest level compared to July of 2016 and 2015.

A comparatively lower MSI is more beneficial for sellers while a higher MSI is better for buyers. The July 2017 MSI of 6.9 months was at a mid range compared with July of 2016 and 2015.

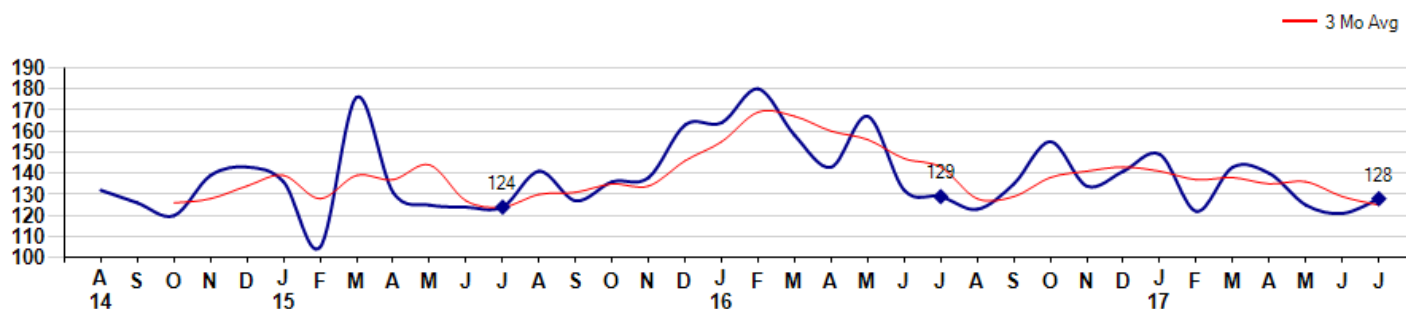
MSI is the # of months needed to sell all of the Inventory at the monthly Sales Pace



### Market Time

The average Days On Market(DOM) shows how many days the average Property is on the Market before it sells. An upward trend in DOM tends to indicate a move towards more of a Buyer's market, a downward trend a move towards more of a Seller's market. The DOM for July was 128, up 5.8% from 121 days last month and down -0.8% from 129 days in July of last year. The July 2017 DOM was at a mid range compared with July of 2016 and 2015.

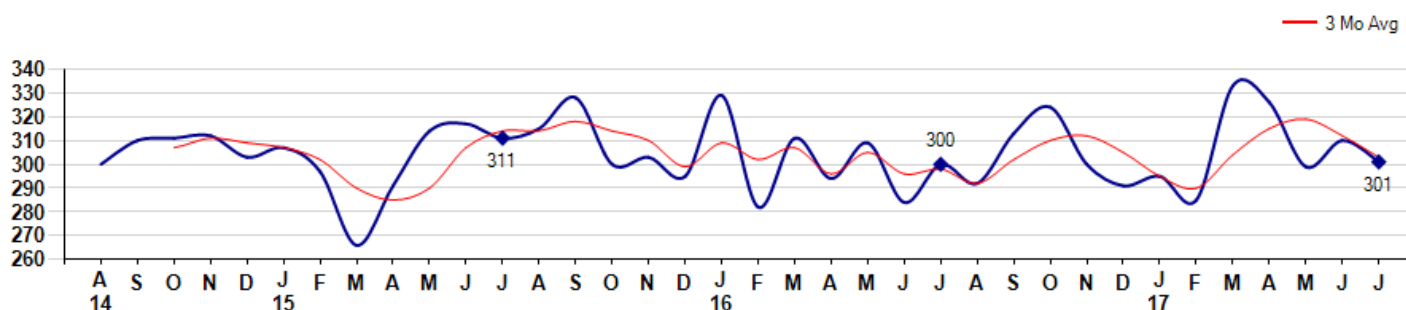
Average Days on Market(Listing to Contract) for properties sold during the month



### Selling Price per Square Foot

The Selling Price per Square Foot is a great indicator for the direction of Property values. Since Median Sales Price and Average Sales price can be impacted by the 'mix' of high or low end Properties in the market, the selling price per square foot is a more normalized indicator on the direction of Property values. The July 2017 Selling Price per Square Foot of \$301 was down -2.9% from \$310 last month and up 0.3% from \$300 in July of last year.

Average Selling Price per Square Foot for properties that sold during the month



## City: *Fairfield*



**Joni Usdan**  
 Residential Real Estate Specialist  
 2032167654  
 www.jonihomes.com  
 joni@jonihomes.com

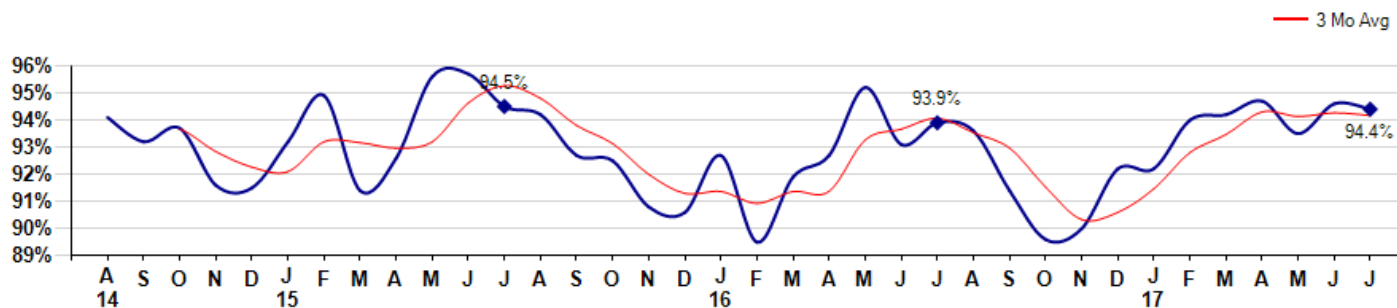


Price Range: 0 to 999999999 | Properties: Single Family Home

### Selling Price vs Listing Price

The Selling Price vs Listing Price reveals the average amount that Sellers are agreeing to come down from their list price. The lower the ratio is below 100% the more of a Buyer's market exists, a ratio at or above 100% indicates more of a Seller's market. The July 2017 Selling Price vs List Price of 94.4% was down from 94.6% last month and up from 93.9% in July of last year.

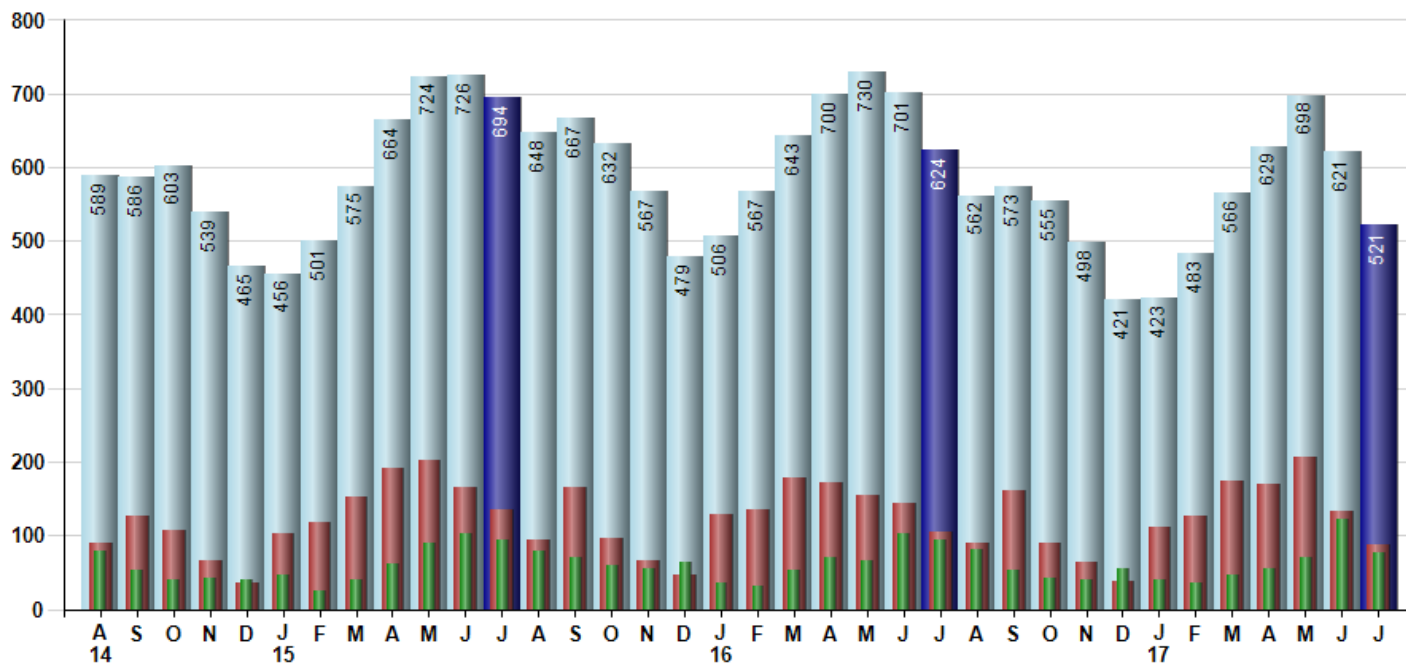
Avg Selling Price divided by Avg Listing Price for sold properties during the month



### Inventory / New Listings / Sales

This last view of the market combines monthly inventory of Properties for sale along with New Listings and Sales. The graph shows the basic annual seasonality of the market as well as the relationship between these items. The number of New Listings in July 2017 was 88, down -33.8% from 133 last month and down -15.4% from 104 in July of last year.

Inventory (light blue), New Listings (red), Sold (green)



© 2017 Coldwell Banker Residential Brokerage. All Rights Reserved. Coldwell Banker Residential Brokerage fully supports the principles of the Fair Housing Act and the Equal Opportunity Act. Coldwell Banker Residential Brokerage is operated by a subsidiary of NRT LLC. Coldwell Banker and the Coldwell Banker Logo are registered service marks owned by Coldwell Banker Real Estate LLC.

Based on information from Greater Fairfield County CMLS, Inc. for the period 8/1/2014 through 7/31/2017. Due to MLS reporting methods and allowable reporting policy, this data is only informational and may not be completely accurate. Therefore, Coldwell Banker Residential Brokerage does not guarantee the data accuracy. Data maintained by the MLS's may not reflect all real estate activity in the market.

