

## City: Fairfield



**Joni Usdan**  
 Residential Real Estate Specialist  
 2032167654  
 www.jonihomes.com  
 joni@jonihomes.com



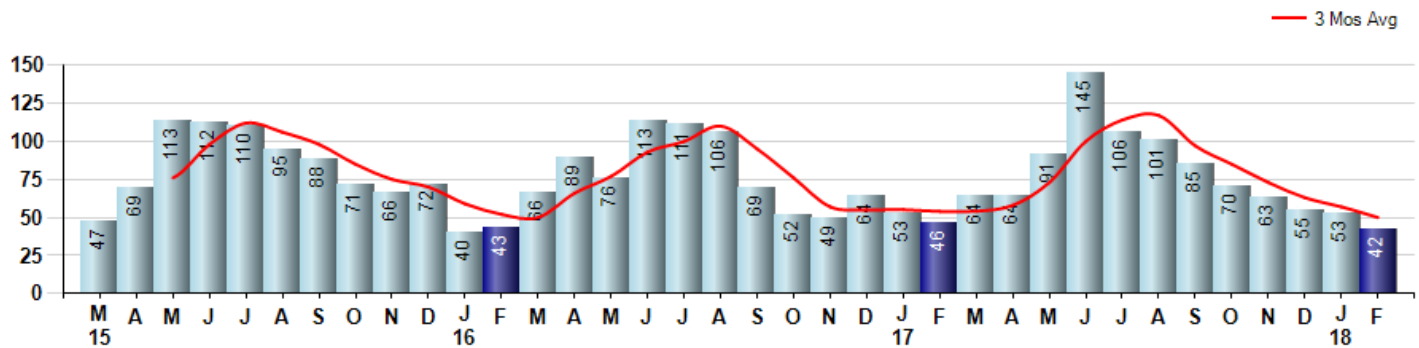
Price Range: 0 to 999999999 | Properties: Single Family Home, Townhome, Condo

Market Profile & Trends Overview	Month	Trending Versus*:				YTD	Trending Versus*:	
		LM	L3M	PYM	LY		PriorYTD	PriorYear
Median List Price of all Current Listings	\$799,000	↑		↑				
Average List Price of all Current Listings	\$1,075,801	↔		↑				
February Median Sales Price	\$622,500	↑	↑	↑	↑	\$575,000	↑	↑
February Average Sales Price	\$767,396	↔	↔	↑	↑	\$766,705	↑	↑
Total Properties Currently for Sale (Inventory)	433	↑		↓				
February Number of Properties Sold	42	↓		↓		95	↓	
February Average Days on Market (Solds)	83	↓	↓	↓	↓	90	↓	↓
Asking Price per Square Foot (based on New Listings)	\$295	↑	↔	↓	↔	\$291	↓	↓
February Sold Price per Square Foot	\$259	↓	↓	↑	↓	\$264	↑	↓
February Month's Supply of Inventory	10.3	↑	↑	↓	↑	8.3	↓	↑
February Sale Price vs List Price Ratio	94.6%	↑	↑	↑	↑	92.6%	↓	↓

\* LM=Last Month / L3M=Last 3 Months / PYM=Same Month Prior Year / LY=Last Year / YTD = Year-to-date

### Property Sales

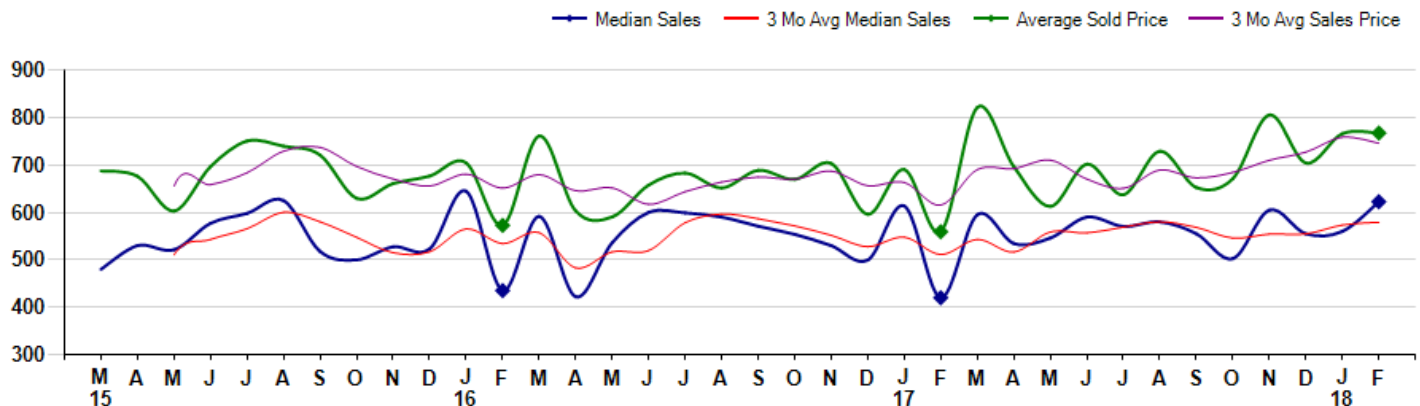
February Property sales were 42, down -8.7% from 46 in February of 2017 and -20.8% lower than the 53 sales last month. February 2018 sales were at their lowest level compared to February of 2017 and 2016. February YTD sales of 95 are running -4.0% behind last year's year-to-date sales of 99.



### Prices

The Median Sales Price in February was \$622,500, up 48.2% from \$420,000 in February of 2017 and up 11.2% from \$560,000 last month. The Average Sales Price in February was \$767,396, up 37.2% from \$559,146 in February of 2017 and up 0.2% from \$766,157 last month. February 2018 ASP was at highest level compared to February of 2017 and 2016.

Median means Middle (the same # of properties sold above and below Median) (000's)



© 2018 Coldwell Banker Residential Brokerage. All Rights Reserved. Coldwell Banker Residential Brokerage fully supports the principles of the Fair Housing Act and the Equal Opportunity Act. Coldwell Banker Residential Brokerage is operated by a subsidiary of NRT LLC. Coldwell Banker and the Coldwell Banker Logo are registered service marks owned by Coldwell Banker Real Estate LLC.

Based on information from SmartMLS for the period 3/1/2015 through 2/28/2018. Due to MLS reporting methods and allowable reporting policy, this data is only informational and may not be completely accurate. Therefore, Coldwell Banker Residential Brokerage does not guarantee the data accuracy. Data maintained by the MLS's may not reflect all real estate activity in the market.



## City: *Fairfield*



**Joni Usdan**  
 Residential Real Estate Specialist  
 2032167654  
 www.jonihomes.com  
 joni@jonihomes.com



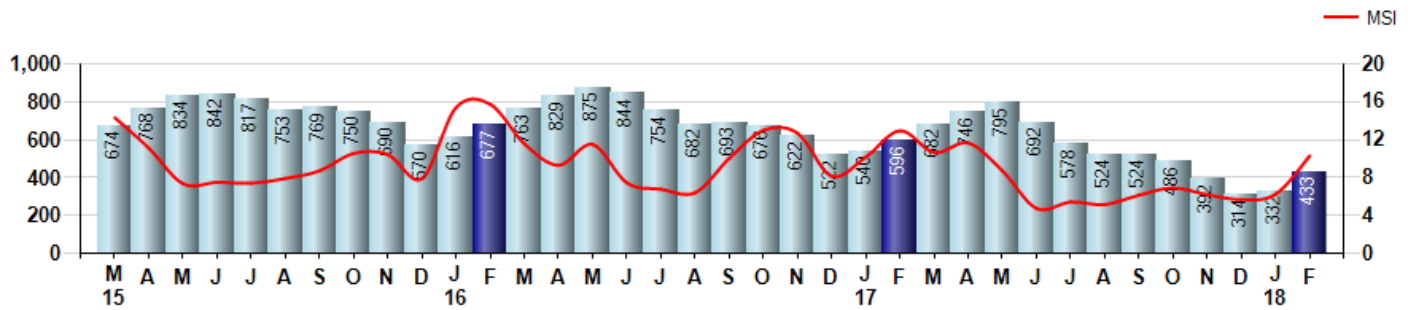
Price Range: 0 to 999999999 | Properties: Single Family Home, Townhome, Condo

### Inventory & MSI

The Total Inventory of Properties available for sale as of February was 433, up 30.4% from 332 last month and down -27.3% from 596 in February of last year. February 2018 Inventory was at the lowest level compared to February of 2017 and 2016.

A comparatively lower MSI is more beneficial for sellers while a higher MSI is better for buyers. The February 2018 MSI of 10.3 months was at its lowest level compared with February of 2017 and 2016.

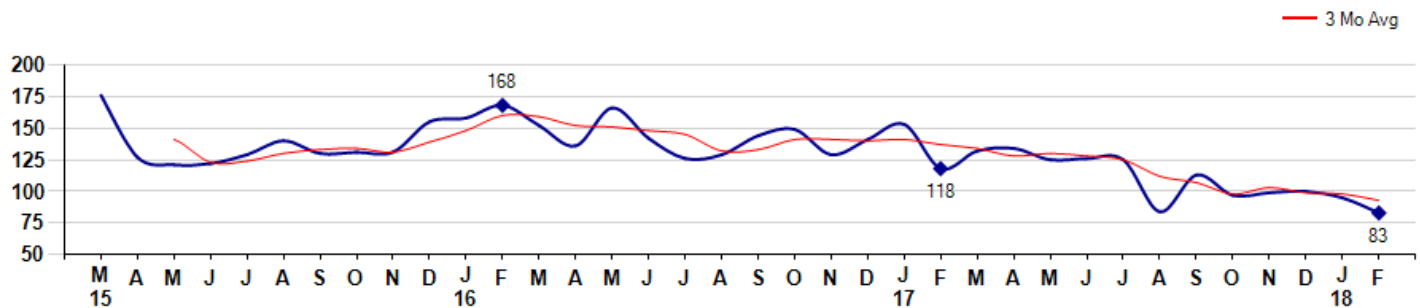
MSI is the # of months needed to sell all of the Inventory at the monthly Sales Pace



### Market Time

The average Days On Market(DOM) shows how many days the average Property is on the Market before it sells. An upward trend in DOM tends to indicate a move towards more of a Buyer's market, a downward trend a move towards more of a Seller's market. The DOM for February was 83, down -12.6% from 95 days last month and down -29.7% from 118 days in February of last year. The February 2018 DOM was at its lowest level compared with February of 2017 and 2016.

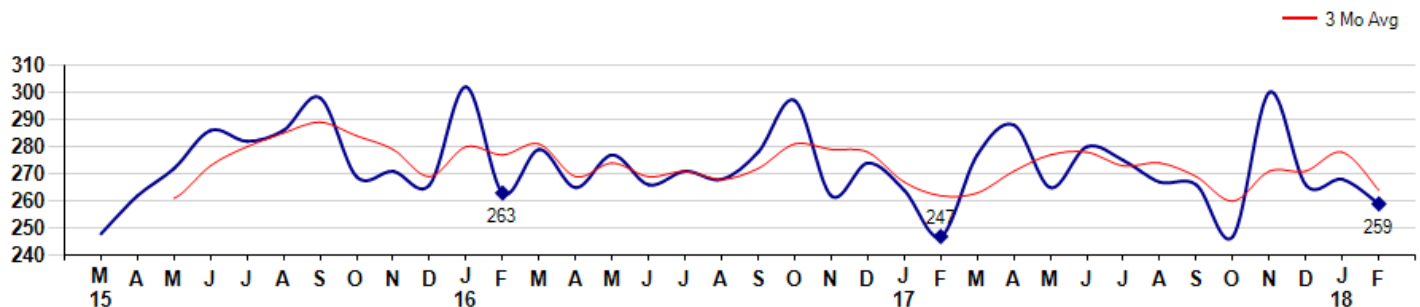
Average Days on Market(Listing to Contract) for properties sold during the month



### Selling Price per Square Foot

The Selling Price per Square Foot is a great indicator for the direction of Property values. Since Median Sales Price and Average Sales price can be impacted by the 'mix' of high or low end Properties in the market, the selling price per square foot is a more normalized indicator on the direction of Property values. The February 2018 Selling Price per Square Foot of \$259 was down -3.4% from \$268 last month and up 4.9% from \$247 in February of last year.

Average Selling Price per Square Foot for properties that sold during the month



## City: *Fairfield*



**Joni Usdan**  
 Residential Real Estate Specialist  
 2032167654  
 www.jonihomes.com  
 joni@jonihomes.com

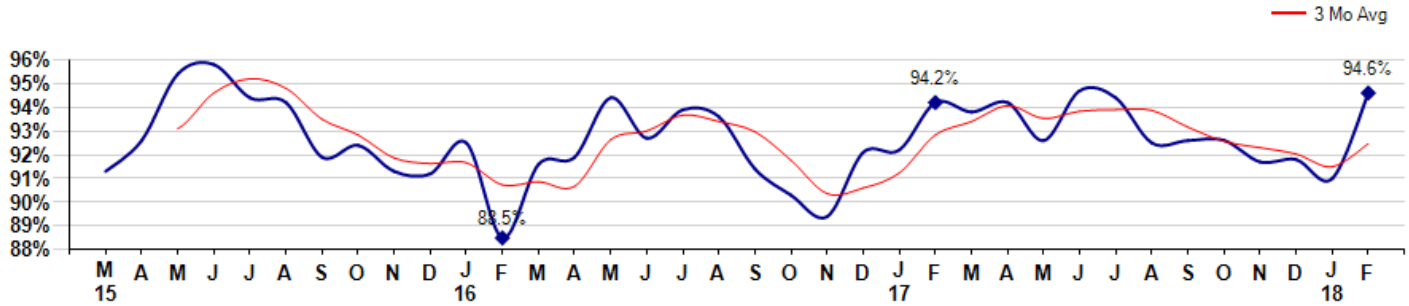


Price Range: 0 to 999999999 | Properties: Single Family Home, Townhome, Condo

### Selling Price vs Listing Price

The Selling Price vs Listing Price reveals the average amount that Sellers are agreeing to come down from their list price. The lower the ratio is below 100% the more of a Buyer's market exists, a ratio at or above 100% indicates more of a Seller's market. The February 2018 Selling Price vs List Price of 94.6% was up from 91.0% last month and up from 94.2% in February of last year.

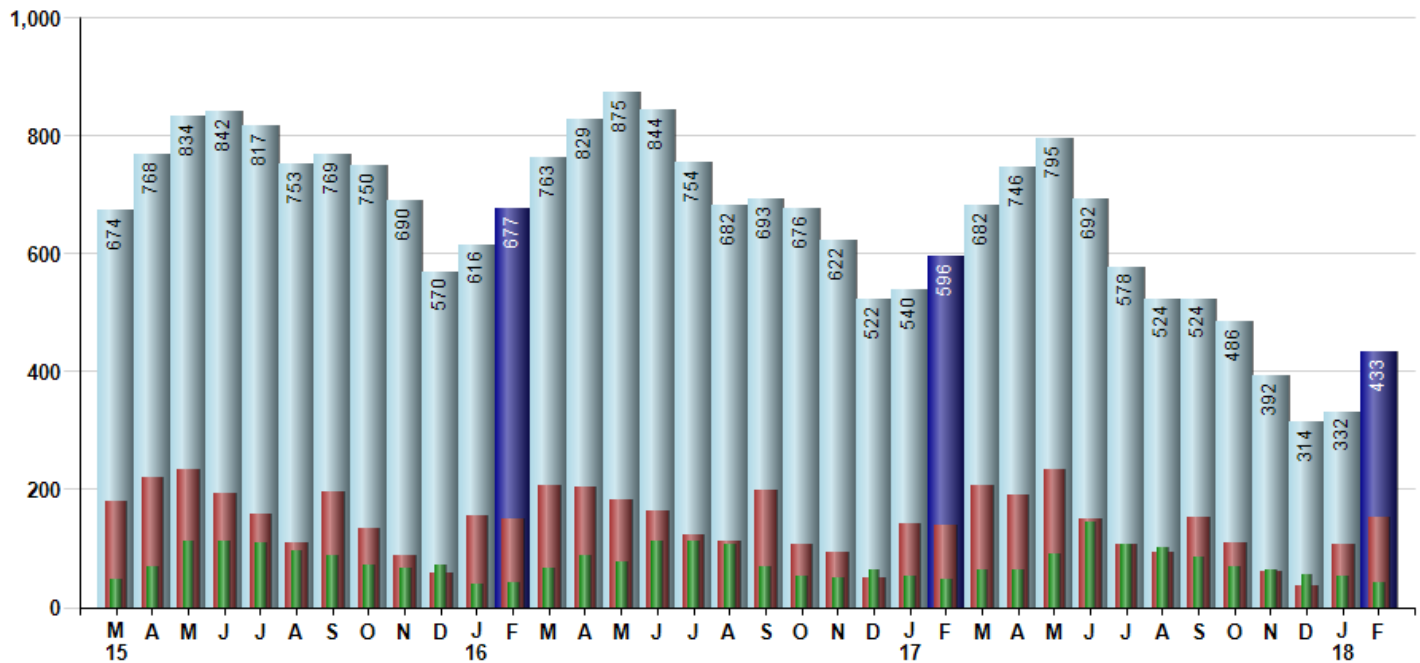
Avg Selling Price divided by Avg Listing Price for sold properties during the month



### Inventory / New Listings / Sales

This last view of the market combines monthly inventory of Properties for sale along with New Listings and Sales. The graph shows the basic annual seasonality of the market as well as the relationship between these items. The number of New Listings in February 2018 was 154, up 42.6% from 108 last month and up 11.6% from 138 in February of last year.

Inventory    New Listings    Sold



© 2018 Coldwell Banker Residential Brokerage. All Rights Reserved. Coldwell Banker Residential Brokerage fully supports the principles of the Fair Housing Act and the Equal Opportunity Act. Coldwell Banker Residential Brokerage is operated by a subsidiary of NRT LLC. Coldwell Banker and the Coldwell Banker Logo are registered service marks owned by Coldwell Banker Real Estate LLC.

Based on information from SmartMLS for the period 3/1/2015 through 2/28/2018. Due to MLS reporting methods and allowable reporting policy, this data is only informational and may not be completely accurate. Therefore, Coldwell Banker Residential Brokerage does not guarantee the data accuracy. Data maintained by the MLS's may not reflect all real estate activity in the market.

