

## City: Wilton



**Joni Usdan**  
Residential Real Estate Specialist  
2032167654  
www.jonihomes.com  
joni@jonihomes.com



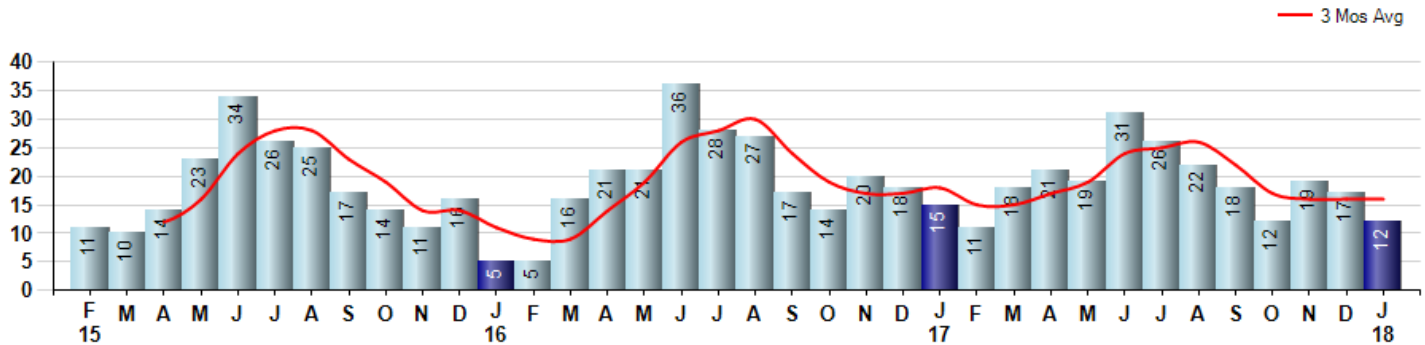
Price Range: 0 to 999999999 | Properties: Single Family Home

Market Profile & Trends Overview	Trending Versus*:					Trending Versus*:		
	Month	LM	L3M	PYM	LY	YTD	PriorYTD	PriorYear
Median List Price of all Current Listings	\$899,750	-1%		0%				
Average List Price of all Current Listings	\$1,178,304	-1%		10%				
January Median Sales Price	\$787,500	38%	21%	16%	7%	\$787,500	16%	7%
January Average Sales Price	\$816,281	15%	9%	1%	-1%	\$816,281	1%	-1%
Total Properties Currently for Sale (Inventory)	126	15%		-33%				
January Number of Properties Sold	12	-29%		-20%			0%	
January Average Days on Market (Solds)	172	-6%	3%	9%	2%	172	9%	2%
Asking Price per Square Foot (based on New Listings)	\$233	14%	0%	-8%	-6%	\$233	-8%	-6%
January Sold Price per Square Foot	\$224	-3%	1%	-22%	-6%	\$224	-22%	-6%
January Month's Supply of Inventory	10.5	62%	25%	-16%	-11%	10.5	-16%	-11%
January Sale Price vs List Price Ratio	92.9%	7.0%	4%	1%	1.6%	92.9%	1.3%	1.6%

\* LM=Last Month / L3M=Last 3 Months / PYM=Same Month Prior Year / LY=Last Year / YTD = Year-to-date

### Property Sales

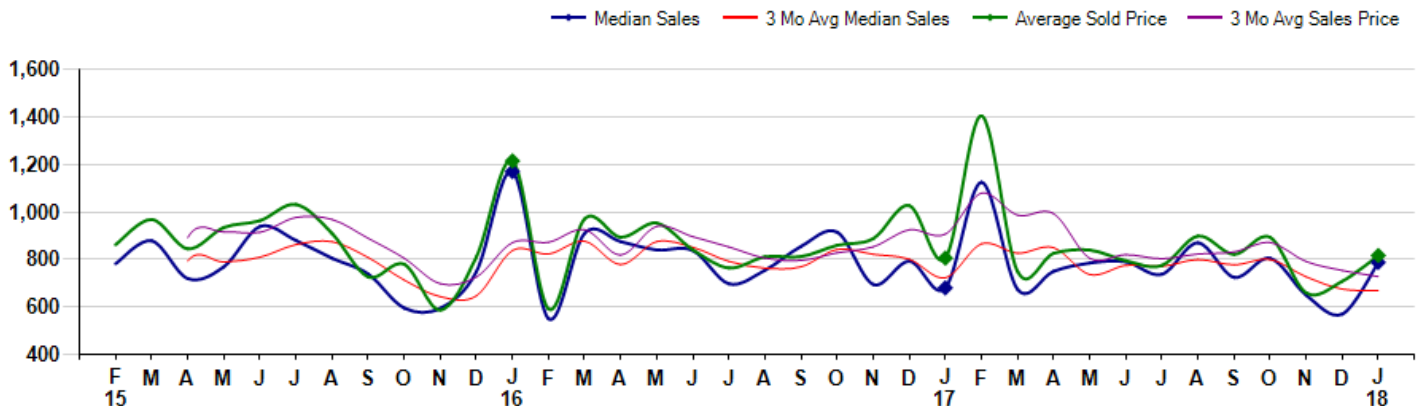
January Property sales were 12, down -20.0% from 15 in January of 2017 and -29.4% lower than the 17 sales last month. January 2018 sales were at a mid level compared to January of 2017 and 2016. January YTD sales of 12 are running -20.0% behind last year's year-to-date sales of 15.



### Prices

The Median Sales Price in January was \$787,500, up 15.8% from \$680,000 in January of 2017 and up 38.2% from \$570,000 last month. The Average Sales Price in January was \$816,281, up 1.4% from \$805,400 in January of 2017 and up 15.2% from \$708,353 last month. January 2018 ASP was at a mid range compared to January of 2017 and 2016.

Median means Middle (the same # of properties sold above and below Median) (000's)



## City: Wilton



**Joni Usdan**  
Residential Real Estate Specialist  
2032167654  
www.jonihomes.com  
joni@jonihomes.com



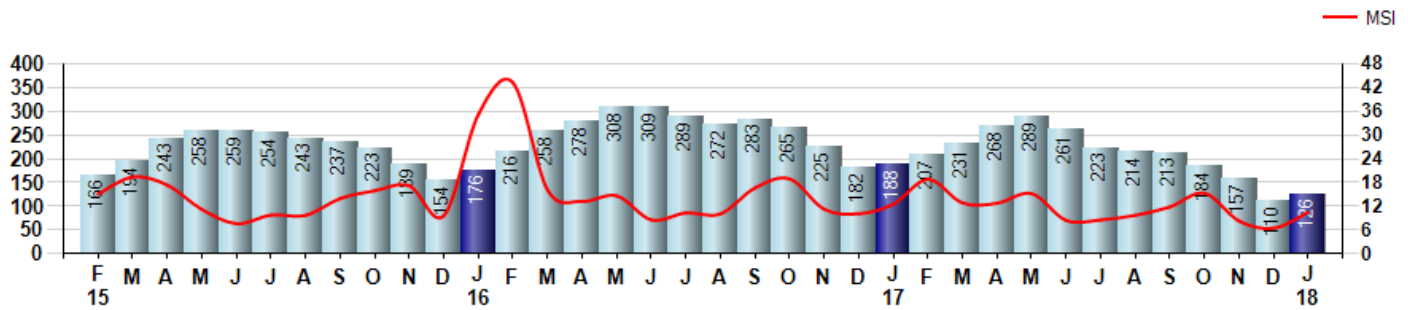
Price Range: 0 to 999999999 | Properties: Single Family Home

### Inventory & MSI

The Total Inventory of Properties available for sale as of January was 126, up 14.5% from 110 last month and down -33.0% from 188 in January of last year. January 2018 Inventory was at the lowest level compared to January of 2017 and 2016.

A comparatively lower MSI is more beneficial for sellers while a higher MSI is better for buyers. The January 2018 MSI of 10.5 months was at its lowest level compared with January of 2017 and 2016.

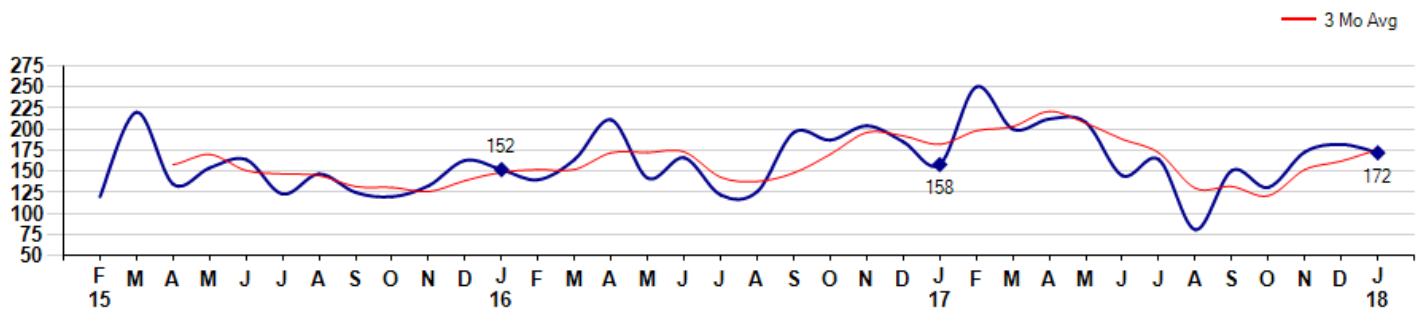
MSI is the # of months needed to sell all of the Inventory at the monthly Sales Pace



### Market Time

The average Days On Market(DOM) shows how many days the average Property is on the Market before it sells. An upward trend in DOM tends to indicate a move towards more of a Buyer's market, a downward trend a move towards more of a Seller's market. The DOM for January was 172, down -5.5% from 182 days last month and up 8.9% from 158 days in January of last year. The January 2018 DOM was at its highest level compared with January of 2017 and 2016.

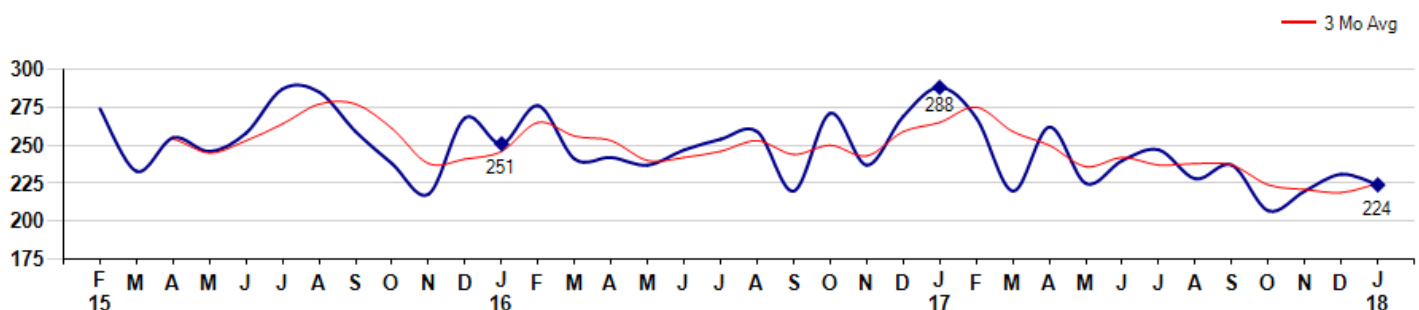
Average Days on Market(Listing to Contract) for properties sold during the month



### Selling Price per Square Foot

The Selling Price per Square Foot is a great indicator for the direction of Property values. Since Median Sales Price and Average Sales price can be impacted by the 'mix' of high or low end Properties in the market, the selling price per square foot is a more normalized indicator on the direction of Property values. The January 2018 Selling Price per Square Foot of \$224 was down -3.0% from \$231 last month and down -22.2% from \$288 in January of last year.

Average Selling Price per Square Foot for properties that sold during the month



## City: Wilton



**Joni Usdan**  
 Residential Real Estate Specialist  
 2032167654  
 www.jonihomes.com  
 joni@jonihomes.com

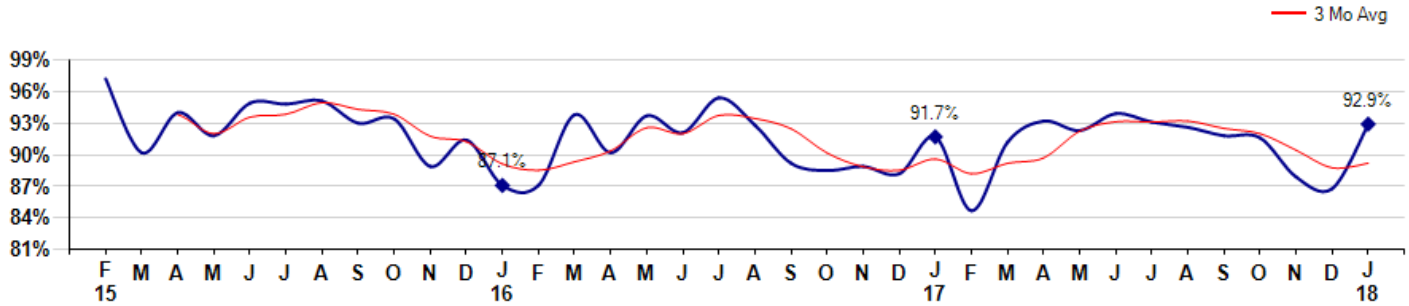


Price Range: 0 to 999999999 | Properties: Single Family Home

### Selling Price vs Listing Price

The Selling Price vs Listing Price reveals the average amount that Sellers are agreeing to come down from their list price. The lower the ratio is below 100% the more of a Buyer's market exists, a ratio at or above 100% indicates more of a Seller's market. The January 2018 Selling Price vs List Price of 92.9% was up from 86.8% last month and up from 91.7% in January of last year.

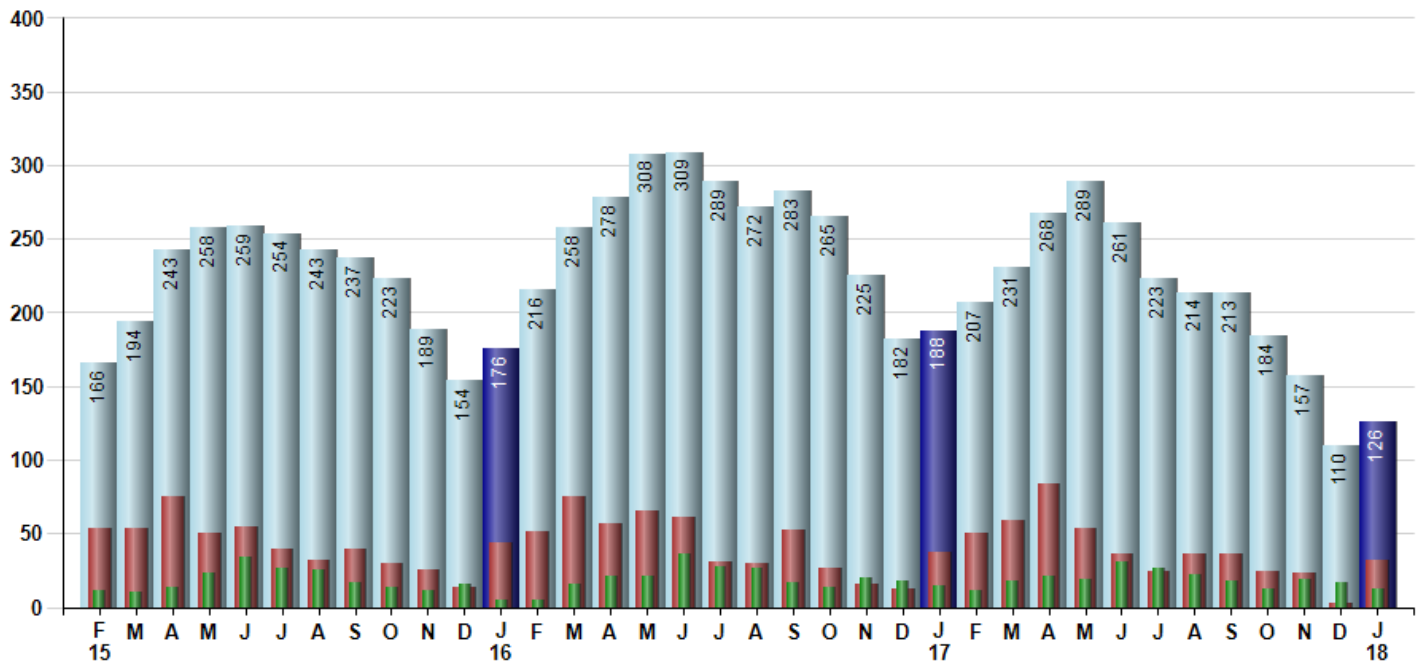
Avg Selling Price divided by Avg Listing Price for sold properties during the month



### Inventory / New Listings / Sales

This last view of the market combines monthly inventory of Properties for sale along with New Listings and Sales. The graph shows the basic annual seasonality of the market as well as the relationship between these items. The number of New Listings in January 2018 was 32, up 966.7% from 3 last month and down -13.5% from 37 in January of last year.

Inventory (light blue), New Listings (red), Sold (green)



© 2018 Coldwell Banker Residential Brokerage. All Rights Reserved. Coldwell Banker Residential Brokerage fully supports the principles of the Fair Housing Act and the Equal Opportunity Act. Coldwell Banker Residential Brokerage is operated by a subsidiary of NRT LLC. Coldwell Banker and the Coldwell Banker Logo are registered service marks owned by Coldwell Banker Real Estate LLC.

Based on information from SmartMLS for the period 2/1/2015 through 1/31/2018. Due to MLS reporting methods and allowable reporting policy, this data is only informational and may not be completely accurate. Therefore, Coldwell Banker Residential Brokerage does not guarantee the data accuracy. Data maintained by the MLS's may not reflect all real estate activity in the market.

